

SANUS®
A brand of **legrand**

ADVANCED FULL-MOTION TV WALL MOUNT FOR TVs **65"-100"**

The Advanced Full-Motion Premium TV Mount is a next-generation mount that incorporates the TV into a home in an entirely modern way. Featuring a stylish brushed metal finish and slim profile, the Advanced Full-Motion Mount complements the sleek look of today's TVs. Beneath the mount's exterior is a precision-engineered, ultra-strong solid steel frame – ensuring the TV stays securely in place.

Expertly engineered with FluidMotion™ design, the Advanced Full-Motion Mounts provide unparalleled smoothness – allowing for effortless extension and swivel. The mount's Steady Set™ functionality holds the TV in place – eliminating drift and unwanted TV movement. The simple and intuitive design guarantees a quick and hassle-free installation.



Model **VXF830-B2**



SANUS®

A brand of **legrand**



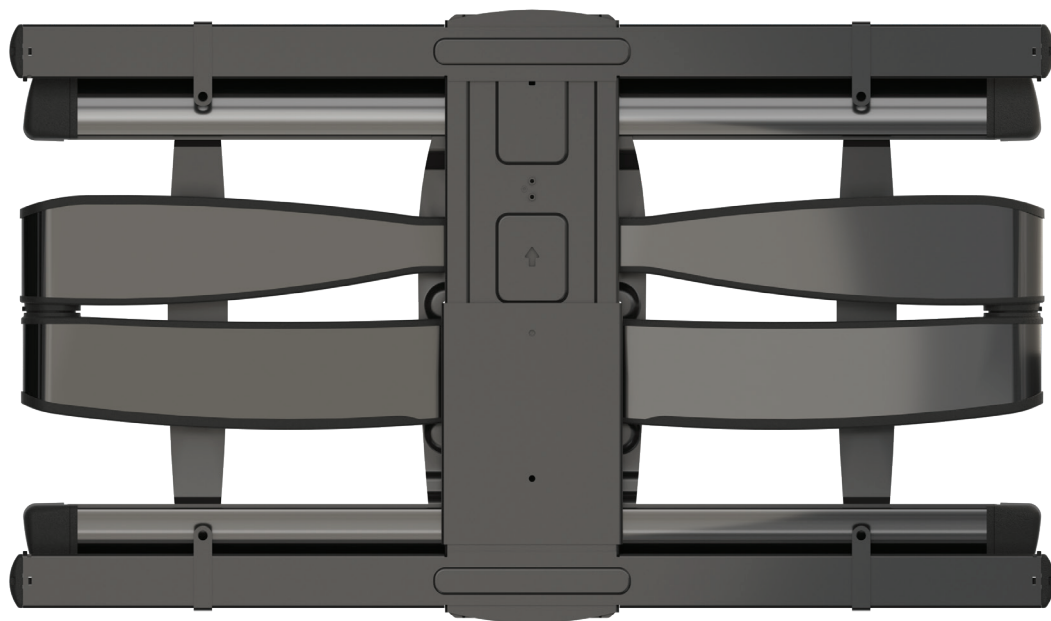
Steady Set™

Easily adjust TV;
Tilt, swivel and extend



Slim Profile

Places TV 2.61" from wall



Cable Management

Conceal and route cables
through the arm



Extends 30-inches

Easier access behind TV



Great View from Any Seat

Tilts down 15°, Tilts up 7°,
Swivels up to ± 55°



Level + Center

TV after installation

MODEL

VXF830-B2

UPC

793795540102



PRODUCT DIMENSIONS (W X D X H)

37.51"W x 2.61"D x 24.28"H / 95.28 cm x 6.63 cm x 61.68 cm

PACKAGE DIMENSIONS (W X D X H)

40.08"L x 23.31"D x 4.45"H / 101.8 cm x 59.2 cm x 11.3 cm

MASTER PACK DIMENSIONS (W X D X H)

40.5"L x 23.9"D x 5.63"H / 102.8 cm x 60.7 cm x 14.3 cm

COMPATIBLE FOR MOST TVs

65" to 100"

TV SIZE WEIGHT CAPACITY

175 lbs. / 79.3 kg.

PACKAGING WEIGHT

66.1 lbs. / 29.96 kg.

MASTER PACK WEIGHT

70.31 lbs. / 31.89 kg.

MASTER PACK QUANTITY

1

MOUNTING PATTERN (VESA)

Minimum 200 x 200

Maximum 900 x 600