

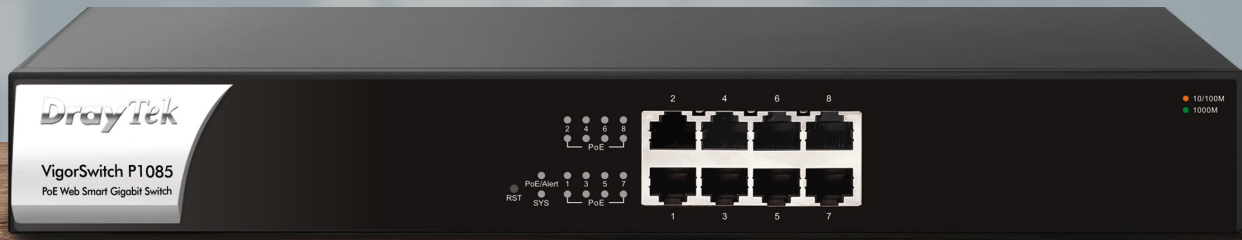
# VigorSwitch P1085

DrayTek

Enterprise-level, 8 port PoE Gigabit managed switch.

Premium. Reliable. Affordable.

Datasheet



## Product Overview

VigorSwitch P1085 is an 8 port PoE+ Gigabit Managed switch with a plethora of management options and enterprise-level features to improve network stability and security for businesses.

## Key Features & Benefits

### Manage Centrally or Stand-Alone

Configure and monitor the switch through the VigorACS cloud management platform, through VigorConnect, through a DrayTek Vigor router, or directly via the device's Web Interface.

**Benefits:** Save time and money. Easily provision, monitor and manage remote sites without on-site IT or dedicated staff.

### Smart Power over Ethernet

Provides ample power through Ethernet to each of the 8 PoE / PoE+ enabled Gigabit LAN ports. PoE scheduling, priority & Device Check features ensure your PoE devices are powered and working

**Benefits:** Power and manage IP cameras, IP phones and Wireless AP.

### Automatic VLAN Assignment

Use the Voice VLAN, Surveillance VLAN and MAC VLAN to dynamically assign VLANs to IP Phones, IP Cameras and individual devices. Ensures the same network and QoS configuration regardless of which port a device is plugged into.

**Benefits:** Less time to install, move ports around without reconfiguring VLANs.

### IP Camera Management

Make IP camera management easier with detection and management of ONVIF cameras. View a topology of all cameras connected. PoE Device Check and Email Alerts with Camera Snapshot help to rapidly detect & troubleshoot problems.

**Benefits:** Easily configure, deploy & manage connected IP Camera.

### Useful Security Features

Protect your network against unauthorised access and network problems with IP Conflict Prevention, DoS Defence, Access Control Lists for IPv4, IPv6, MAC and IP Source Guard.

**Benefits:** Secure & control access to your network.

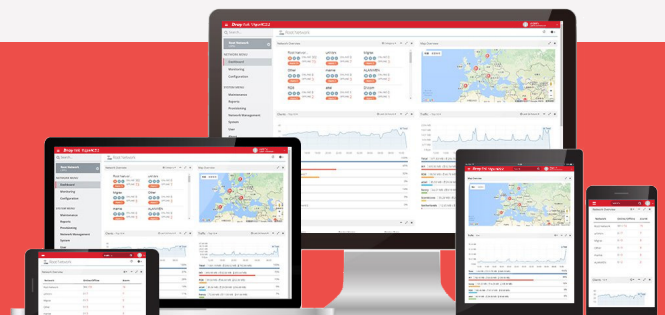
### Rack Mountable & Silent

Fit the VigorSwitch P1085 with the included rack mounting kit into any standard 19" rack.

The switch is fanless and silent, ideal for use in a quiet office environment.

**Benefits:** Flexible installation. Quiet in operation.

Compatible with VigorACS Centralised Management Platform



## Key Specification

- 8 x RJ-45 Gigabit Ethernet Ports
- 140-watt Power-over-Ethernet budget for demanding applications
- Cloud Managed with VigorACS
- 802.1q VLANs with Dynamic MAC-based, Voice & Surveillance VLAN
- ONVIF IP Camera Surveillance Management with PoE Device Check
- Access Control List (ACL) for port & traffic level security
- Port Mirroring & Link Aggregation
- IGMP Snooping & Querying
- IPv4 and IPv6 Support with IP Conflict Prevention
- Centrally managed or standalone operation

## Technical Specification (UK Hardware Spec.)

### Physical Interfaces

- 8 RJ-45 Ethernet Ports – 10/100/1000Mbps
- Factory Reset Button

### Power over Ethernet (PoE)

- 8 Power over Ethernet LAN ports – PoE PSE Mode A
- IEEE 802.3af PoE & 802.3at PoE+ (High Power) compliant
- 140 Watts Total Power Budget for PoE
- Up to 30 watts per port
- Auto Detection of Powered Device (PD) and Consumption Levels
- Per Port PoE Status LED Indicators
- Alert LED and Mail Alert for high PoE Usage
- Port Power Consumption Monitoring via Web Interface & CLI
- Circuit Protection to Prevent Power Interference between Ports
- PoE PD Monitoring & Maintenance Features (per port)
  - Scheduling
  - PoE PD Priority
  - Restart PoE PD if not responding to ping
  - Restart PoE IP Camera if not providing camera output

### Virtual LAN (VLAN)

- 802.1q Tag-based VLAN
- Port-based & MAC-based VLANs
- Up to 255 VLANs (out of 4096 VLAN IDs)
- Voice VLAN (OUI Mode)
- Surveillance VLAN (OUI Mode)
- Management VLAN
- Port Isolation (Protected Ports)

### Quality of Service (QoS)

- Support 8 priority queues
- Port-Based rate control (Ingress & Egress)
- Priority queue schedule (WRR or Strict Priority)
- Rate Limit & Shaping
- Class of Service
  - 802.1p CoS
  - DSCP
  - CoS-DSCP
  - IP Precedence ToS

### Network Security

- IP Source Guard with ARP inspection
- IP Conflict Prevention
- Storm Control (Broadcast, Unknown Multicast, Unknown Unicast)
- DoS Attack protection
- Protected Port / Port Isolation
- Loop Protection
- Access Control Lists (ACL)
  - Up to 512 ACL Entries
  - Source and destination MAC
  - VLAN ID
  - Pv4/v6 address
  - Protocol
  - TCP/UDP port

### Spanning Tree

- Spanning Tree Protocol – STP
- Rapid Spanning Tree Protocol – RSTP

### Link Aggregation

- Combine multiple ports to increase bandwidth
- 8 Aggregation Groups
- Up to 8 ports in each group
- LACP or Static setup
- Supports traffic load balancing

### Networking Performance

- Switching Capacity: 16Gbps
- Forwarding Rate: 11.9Mpps
- Jumbo Frames up to 9KB
- Packet Buffer size: 4.1Mbit

### Multicast

- IGMP Snooping V2/V3 (BISS)
- IGMP Querier V2/V3 (BISS)

### ONVIF Surveillance Management

- Discovery of ONVIF-compliant IP Cameras
- Surveillance Topology
- Real-Time Video Streaming
- ONVIF Device Maintenance
  - Device Information
  - Network Settings Configuration
  - Time Settings
  - Reboot
  - Reset to Factory Default Settings
  - Ping Check with Mail Alert on disconnection

### Management

- Central Management
  - VigorACS
  - VigorConnect
  - Vigor Router Switch Management (requires router firmware support)
- IPv4 & IPv6 Dual-Stack
- Web User Interface
- Firmware Upgrade/Backup
- Configuration Backup/Restore
- Factory Default
- System Reboot
- 2-level Admin Privileges
- Multiple Admin Accounts
- Command Line Interface (CLI) via SSH/Telnet
- OpenVPN Client with Certificate-based auth
- SNMP v1, v2c, v3 (with Generic Traps)
- SNTP (Simple Network Time Protocol)
- LLDP (802.1ab)

## Technical Specification (UK Hardware Spec.) (cont.)

### Diagnostics

- Port Status & Usage display
- CPU/RAM Usage display
- MAC Address Table
- Device Check
- Syslog
- Mail Alert
  - Port Status
  - Port Speed Change
  - System Restart
  - Device Check
  - IP Conflict
  - ONVIF IP Camera Snapshot
- Port Mirroring
- Ping Diagnostics
- Port-based Cable Test

### IPv4 Features

- DHCP Client
- DNS Client

### IPv6 Features

- Auto Configuration
- Static IPv6 Address & Prefix Length
- Static IPv6 Default Gateway
- IPv6 Neighbour Discovery (ND)
- IPv6 Duplicate Address Detection
- ICMPv6
- DHCPv6 Client

### General IEEE Standards Compliance

- 802.3af PoE
- 802.3at PoE+
- 802.3 10Base-T
- 802.3u 100Base-T
- 802.3ab 1000Base-T

### General IEEE Standards Compliance (cont.)

- 802.3x Flow Control
- 802.3 Auto-Negotiation
- 802.1q Tag-based VLAN
- 802.1p Class of Service
- 802.1d STP
- 802.1w RSTP
- 802.3ad LACP
- 802.1x Port Access Control
- 802.1AB LLDP
- 802.3az EEE

### Operating Requirements

- Power Input Requirements: 100-240VAC
- Power supply: Internal
- Maximum Input Power Consumption: 162 watts
- Cooling: Passively cooled
- Operating Temperature: 0 °C to 45 °C
- Storage Temperature: -20 °C to 70 °C
- Operating Humidity: 5% to 90% RH (non-condensing)

### Box Contents

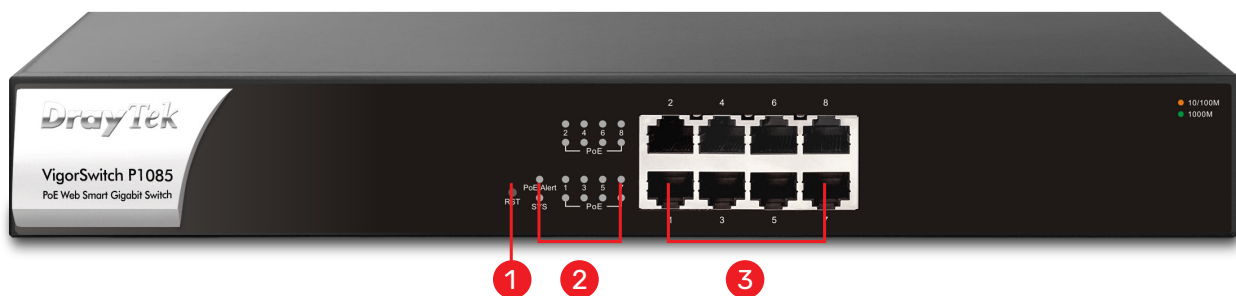
- DrayTek VigorSwitch P1085
- IEC C13 Mains Power Cable with UK Plug
- Rack Mounting Brackets & Screws
- Quick Start Guide

### Physical Specifications

- Dimensions: 330 x 230 x 44 mm (W x D x H)
- Rack Mountable: 1U
- Weight: 2.27Kg

### ROHS & CE Compliant

Warranty: 2 Year Manufacturer's RTB



1 Reset button

2 LED Indicator

3 8x PoE/PoE+ Gigabit Ethernet