

Vigor 2765 Series

The Ideal SoHo VPN Router for VDSL and Gigabit Fibre

Premium. Reliable. Affordable.

DrayTek



Datasheet

Product Overview

The DrayTek Vigor 2765 series VDSL and Ethernet VPN routers are ideal for Small Office and Home Office networks. Featuring powerful Firewall and Content Filtering, configurable Quality of Service and an array of VPN capabilities, with the performance to make full use of FTTP Fibre Broadband. Incorporating Wireless and VoIP features in '2765ac' and '2765Vac' models, the Vigor 2765 series provide a reliable, highly integrated and reliable network solution for SoHo environments.

Key Features & Benefits

VDSL and Ethernet Router

Connect the Vigor 2765 to Superfast Fibre with its integrated VDSL modem. Or connect to VirginMedia Cable and Ultrafast FTTP with Ethernet WAN.

Benefits: Suitable for all Broadband services. DrayTek Firewall, Content Filtering and Quality of Service.

Powerful SoHo VPN Router

Connect remote locations with 2 VPN tunnels for Remote Dial-In User Teleworker and Dial-Out LAN to LAN VPN. Up to 200Mbps IPsec performance, with SSL and OpenVPN support.

Benefits: Securely access resources remotely. Connect to VPN services for secure browsing.

AC1300 Wireless with Mesh

Connect DrayTek VigorAP Access Points to the router in a wireless Mesh. DrayTek's Self-Optimising Mesh ensures access points are always connecting through best path to your Router.

Benefits: Easily expand wireless coverage. Reduces the need for cable installation.

Integrated VoIP Telephone Ports

Connect 2 analogue phones to VoIP with the 'Vac' model. Great VoIP features such as auto VoIP QoS and configurable SIP ALG improve the reliability and quality of VoIP calls.

Benefits: All in one solution for Internet and Phone service. Great VoIP features.

Packed With Features

Configure DrayTek's rich feature set to fit your network with Route Policy, Quality of Service, VPN Matcher, DrayDDNS and more.

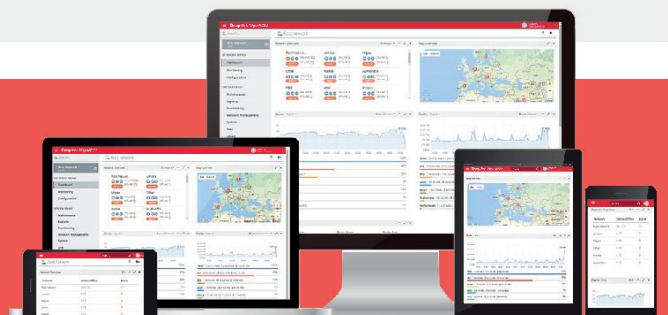
Benefits: Convenient and powerful DrayTek router features for hassle-free networking.

VigorACS Central Management

Use the VigorACS central management platform to manage, monitor and configure the Vigor 2765 series routers remotely across multiple locations.

Benefits: Save time and money. Easily provision, monitor and manage remote sites without on-site IT or dedicated staff.

Compatible with VigorACS Centralised Management Platform



Key Specification

- VDSL2 (Superfast Fibre) or Gigabit Ethernet WAN Router with Failover
- Up to 950Mbps Firewall Throughput for Ethernet WAN
- 4 Gigabit LAN Ports
- AC1300 - 11ac 'Wave 2' Dual Band Wireless ('ac' models)
- 2 PSTN Telephone (FXS) VoIP SIP ATA ports ('Vac' model)
- 2 LAN Subnets with VLANs (Port-based / 802.1q)
- SPI Firewall and Content Filtering
- Up to 200Mbps IPsec VPN Throughput
- 2 Dial-Out LAN-to-LAN or Remote Teleworker VPN Tunnels
- DrayTek SSL VPN and OpenVPN support
- Optional VigorCare Available
- Compatible with VigorACS central management platform



Technical Specification (UK Hardware Spec.)

Physical Interfaces

- WAN1: VDSL2 / VDSL2 35b / ADSL2+, RJ-11
- WAN2/LAN Switchable Port: 1x Gigabit Ethernet (1G/100M/10M), RJ-45
- WAN3: USB 2.0 Port for 3G/4G Modem (not included)
- LAN Ports: 4x Gigabit Ethernet (1G/100M/10M), RJ-45 (3x with WAN2 enabled)
- 2x PSTN RJ-11 Telephone Ports ('Vac' model)
- 2x USB 2.0 Port for USB storage, thermometer or Printer
- 2x Removable Wireless antennas (wireless models)
- Wireless On / Off / WPS button
- Recessed Factory Reset button

Performance

- Router Performance:
 - 100 Mb/s Max Sync Rate with VDSL2
 - 300 Mb/s Max Sync Rate with VDSL2 35b
 - 950 Mb/s NAT Throughput for Ethernet WAN with Hardware Acceleration
 - 700 Mb/s NAT Throughput per WAN without Hardware Acceleration
 - 50,000 NAT Sessions
- VPN Performance:
 - 200 Mb/s IPsec (AES256) VPN Throughput
 - 80 Mb/s SSL VPN Throughput
 - Max. 2 Concurrent VPN Tunnels

Internet Connection

- Hardware Acceleration
- Failover / Backup WAN
- 802.1p/q Multi-VLAN Tagging
- Multi-VLAN/PVC
- WAN Active on Demand: Link Failure, Traffic Threshold
- Connection Detection: PPP, ARP Detect, Ping Detect
- WAN Data Budget
- Dynamic DNS
- DrayDDNS - with automated LetsEncrypt Certificates - **New!**
- Full Feature-set Hardware Acceleration (requires f/w 4.3.0):
 - Hardware Accelerated Quality of Service
 - Multi-WAN Data Budget
 - Traffic Graph & Data Flow Monitor
 - Bandwidth Limit
- IPv4 Connection Types: PPPoE, DHCP, Static IP, PPTP/L2TP
- IPv6 Connection Types:
 - DSL & Ethernet: PPP, DHCPv6, Static IPv6, TSPC, AICCU, 6rd, 6in4 Static Tunnel
 - USB 4G/LTE Modem: TSPC, AICCU

VDSL & ADSL Features

- BT Infinity Option 1 & Option 2 Compatible
- Compliant with Openreach SIN 498
- Auto Detection of VDSL and ADSL line modes
- Support for G.INP & Vectoring
- **VDSL Standards:**
 - ITU-T G.993.1 VDSL
 - ITU-T G.993.2, G.997.1 VDSL2
 - Band Plan: G.998, G.997
 - Annex A, Annex B, Annex C
 - VDSL2 Profile: 8a, 8b, 8c, 8d, 12a, 12b, 17a, 35b
 - OLR, UPBO, DPBO Supported
 - USO Supported
 - Loop Diagnostic Mode
 - DSL Forum WT-114

ADSL Standards:

- ANSI T1.413 Issue2
- ITU-T G.992.1 G.dmt (ADSL)
- ITU-T G.992.2 G.lite
- ITU-T G.992.3 ADSL2
- ITU-T G.992.5 ADSL2+

ATM Protocols:

- RFC-2684/RFC-1483 Multiple Protocol over AAL5
- RFC-2516 PPP over Ethernet
- RFC-2364 PPP over AAL5
- Support for RFC4638 for MTU up to 1500

Wireless Features ('ac' models)

- AC1300 - 11ac 'Wave 2' Dual Band Wireless ('ac' models):
 - 802.11ac 2x2 wireless access point
 - 2.4GHz: 2x2 MIMO with 2 dBi Antenna Gain
 - 5GHz: 2x2 MU-MIMO with 4 dBi Antenna Gain
 - Backwards Compatible with 802.11a/b/g/n wireless
 - Dual-band (2.4/5GHz) simultaneous wireless
 - Up to 866Mbps PHY rate at 80MHz with 5GHz
 - Up to 400Mbps PHY rate at 40MHz with 2.4GHz (256-QAM)
 - Channel Bandwidth: 20/40MHz for 2.4GHz, 20/40/80MHz for 5GHz
 - MU-MIMO
 - Tx Beamforming
- Mesh Root support with DrayTek VigorAP Mesh Nodes - **New!** (requires f/w 4.3.0)
- Up to 4 SSIDs per radio band
- Extended 5Ghz Band - Channels 36-48, 52-64, 100-140
- Wireless Optimisation: Airtime Fairness, AP-Assisted Mobility, Band Steering
- Bandwidth Management (Per Station / Per SSID)
- WMM (Wireless MultiMedia)
- WPS - WiFi Protected Setup
- Station Control - Time limited wireless connectivity per Station (e.g. 1 hour)
- EAPOL Key Retry - Disable EAPOL Key Retry to protect unpatched WLAN clients from KRACK
- Wireless Security:
 - WPA2
 - WPA3 - **New!** (requires f/w 4.3.0)
 - Pre-Shared Key authentication
 - WEP/WPA for Legacy Clients
 - Access Control - Blacklist / Whitelist client MAC addresses per SSID

Firewall & Content Filtering

- IP-based or User-based Firewall Policy
- User-based Time Quota
- DoS Attack Defence
- Spoofing Defence
- Content Filtering:
 - Application Content Filter
 - URL Content Filter
 - DNS Keyword Filter
 - Web Features
 - Web Category Filter (requires GlobalView subscription)

NAT Features

- NAT Port Redirection
- Open Ports
- Port Triggering

Technical Specification (UK Hardware Spec.)

- DMZ Host
- UPnP
- ALG (Application Layer Gateway): SIP (configurable), RTSP (configurable), FTP, H.323
- VPN Pass-Through: PPTP, L2TP, IPsec

LAN Management

- 802.1q Tag-based, Port-based VLAN
- Up to 2 LAN Subnets
- Up to 8 VLANs
- DHCP Server:
 - Multiple IP Subnet
 - Custom DHCP Options
 - Bind-IP-to-MAC
 - DHCP Pool Count up to 253 addresses per subnet
 - Wired 802.1x Port Authentication
- Port Mirroring
- Local DNS Server
- Conditional DNS Forwarding

Networking Features

- Policy-based Routing: Protocol, IP Address, Port, Domain/Hostname, Country - **New!**
- DNS Security (DNSSEC)
- Local RADIUS server
- SMB File Sharing (Requires external USB storage)
- Multicast: IGMP Proxy, IGMP Snooping & Fast Leave, Bonjour
- Compatible with IPTV and ISP Video on Demand services (YouView, Sky Q)
- Routing Features: IPv4 & IPv6 Static Routing, Inter-VLAN Routing

VPN Features

- 2 Concurrent active VPN Tunnels
- LAN-to-LAN - Dial-Out VPN Client
- Teleworker-to-LAN - Dial-In VPN Server
- User Authentication: Local, mOTP
- IKE Authentication: Pre-Shared Key and Digital Signature (X.509)
- Encryption: MPPE, DES, 3DES, AES (128/192/256)
- Authentication: SHA-256, SHA-1
- Dead Peer Detection (DPD)
- IPsec NAT-Traversal (NAT-T)
- Virtual IP Mapping - Resolve VPN IP subnet/range conflicts
- DHCP over IPsec
- DrayTek VPN Matcher - Connect to a VPN router that's behind NAT/CG-NAT - **New!**
- VPN Protocols:
 - IPsec IKEv1, IKEv2, IKEv2 EAP
 - IPsec-XAuth
 - DrayTek SSL VPN
 - OpenVPN
 - PPTP for legacy applications
 - L2TP, L2TP over IPsec

Bandwidth Management

- IP-based Bandwidth Limit
- IP-based Session Limit
- User-based Data Quota
- QoS (Quality of Service):
 - Classify via TOS, DSCP, 802.1p, IP Address, Service Type
 - 4 Priority Queues
 - App QoS
 - VoIP Prioritization

VoIP Features ('Vac' model)

- 2x RJ-11 PSTN Telephone Ports (FXS)
- Integrated VoIP SIP ATA (Analogue Telephone Adapter)
- 6 SIP Accounts with VoIP Setup Wizard
- Protocols: SIP, RTP / RTCP
- G.168 Line Echo-cancellation
- Dial Plan: Phone Book, Digit Map, Call Barring
- Voice Codecs: G.711 A / Law, G.723.1, G.726, G.729 A / B, VAD / CNG
- Tone Generation: DTMF, Dial, Busy, Ring Back, Call Progress
- DTMF Transmission: In Band, Out Band (RFC-2833), SIP info
- FAX / Modem Support with G.711 Pass-through and T.38
- Supplemental Services: Caller ID, Call Hold/Retrieve, Waiting, Transfer, Forwarding, Barring
- DND (Do not Disturb)
- MWI (Message Waiting Indicator) (RFC-3842)
- Hotline (Dial preset number when handset lifted)

Management

- Local Service: HTTP, HTTPS, Telnet, SSH, FTP, TR-069
- Config File Export & Import
- Import Config from Vigor 2760 and Vigor 2762
- Auto Backup Config to USB Storage - **New!**
- Firmware Upgrade via TFTP, HTTP, TR-069
- 2-Level Administration Privilege
- Access Control Features: Access List, Brute Force Protection
- Syslog
- SMS, E-mail Notification Alert
- SNMP: v1, v2c, v3
- Managed by VigorACS
- Router Central Management Features:
 - AP Management: Up to 2 VigorAP access points
 - Switch Management: Up to 2 VigorSwitch network switches
 - DrayTek Mesh: Up to 7 VigorAP access points - **New!** (requires f/w 4.3.0)

Operating Requirements

- Wall or Shelf Mountable
- Temperature Operating: 0 °C ~ 45 °C
- Storage: -25 °C ~ 70 °C
- Humidity 10% ~ 90% (non-condensing)
- Power Consumption: 21.8 Watts maximum (Vac model)
- Dimensions:
 - 207mm Width
 - 131mm Depth
 - 42mm Height
- Operating Power: DC 12V (via external PSU, supplied)
- Warranty: Two (2) Years RTB
- Power Requirements: 220-240VAC

Box Contents

- Vigor 2765 series router
- Quick Start Guide
- Screws & wall plugs for wall mounting
- 2m Cat-5e RJ-45 Network Cable
- 2x Detachable Wireless LAN Antennas ('ac' models)
- DC 12V Power Supply with UK Plug

Vigor 2765 series Router Models

UK Product code	EAN	Product name	Product description
V2765-K	4710484741264	Vigor 2765 (UK/IE)	Vigor 2765 wired VDSL and Ethernet Router
V2765AC-K	4712909129633	Vigor 2765ac (UK/IE)	Vigor 2765ac VDSL and Ethernet Router with Wi-Fi 5 AC1300 Wireless
V2765VAC-K	4710484743008	Vigor 2765Vac (UK/IE)	Vigor 2765Vac VDSL and Ethernet Router with Wi-Fi 5 AC1300 Wireless and VoIP