

Tight Buffered Pre - Terms



UK manufactured factory terminated and tested tight buffered 900um fibre Pre-Term assemblies in Multimode OM1, OM3, OM4, OM5 and singlemode OS2 in 4 to 24 cores. LC, SC, ST, FC or APC connectors with machine polished low loss ceramic ferrules in staggered tail (standard) or straight breakouts. Reeled or coiled with removable crush resistant protective tubing for secure transport, fast safe installation and optional pulling eye. Suitable for internal horizontal and backbone cabling. The 900um tight buffered presentation lends itself to installation within an Optical Distribution Frame (ODF), patch panel or enclosure.

CPR Compliant: The cable sheath is LSZH to the Euro Class CPR (Constructors Product Regulations) in Eca, Cca-s1a-d1-a1 or B2ca-s1a-d1-a1 versions. CPR regulations have standardised class ratings across Europe and rate how a cable reacts to fire in terms of how quickly it spreads, heat release, smoke production, acid gas production and flaming droplets. xSiCute is at the forefront in terms of complying with CPR standards. Not all cable assembly manufacturers use cable of such a high standard. See www.xsicute.com for our "Guide to CPR EuroClasses".

The Challenge: When installing network cabling the challenge can be meeting deadline pressures such as minimal installation time, out of hours working, strict access controls, storage or sometimes the necessary available skill set to terminate and test on site. Our solution is UK manufactured Pre-Terms tested in a controlled factory environment. Pre-Terms provide consistent network performance, reducing installation time by 75% compared to field termination methods eliminating the need for on-site bundling and terminating. Factory testing reduces the time and cost associated with on-site testing and ensures verified performance. Permanent link test data is supplied with each assembly.

- Significantly reduced installation and labour costs – up to 75% less time than field termination methods
- No site storage and reduced waste – up to 80% less packaging and no termination scrap material or debris to dispose of.
- 100% factory tested and inspected ensuring plug and play – supplied with test data and fully traceable.
- CPR compliant with Eca, B2ca and Cca cable options.
- UK manufacture with fast turnaround from quote to delivery.

Tight Buffered Pre - Terms

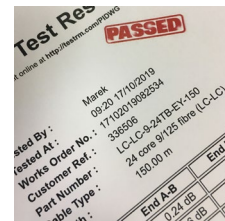
Pre-Term Features:



Crush Resistant Tubing at each end protects in transport & cable pull process



Pulling Eye attached to sock & Kevlar for added strength/pull force. Standard on length of 50 mtrs plus, optional on smaller lengths.



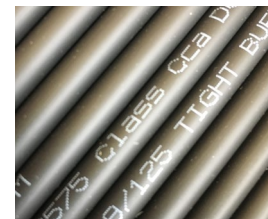
Test Results with each assembly



With M20 Glands & nuts for installing into Patch Panel

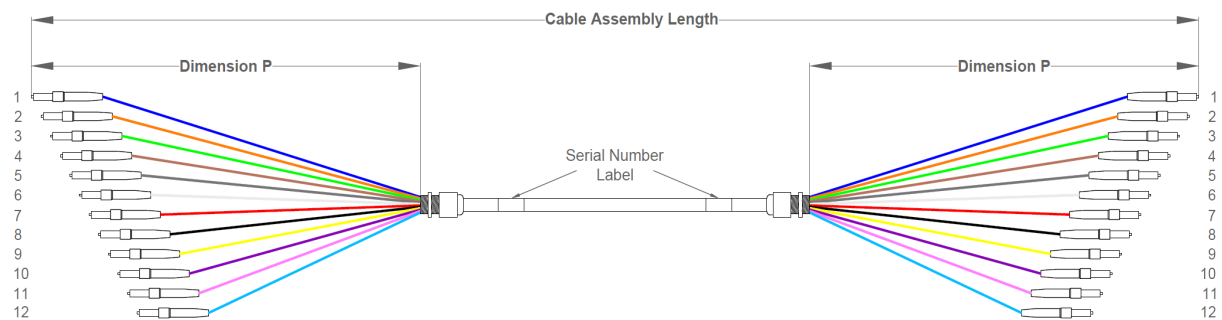


Unique assembly serial number label shows test results online.



CPR compliant LSOH cable in Eca, Cca or B2ca

Typical Pre-Term (12 core version shown)



	Dimension P	Connector Stagger
4 CORE	80cm	5cm
8 CORE	80cm	5cm
12 CORE	80cm	4cm
16 CORE	99cm	4cm
24 CORE	99cm	3cm

Tight Buffered Pre - Terms

Product Part Number Configurator:

<u>Connector</u> <u>End 1*</u>	<u>Connector</u> <u>End 2*</u>	<u>Fibre Type</u>	<u>Fibre</u> <u>Count</u>	<u>Cable</u> <u>Construction</u>	<u>Pulling Type</u> <u>**</u>	<u>Length</u> <u>(Mtrs)</u>	<u>LSOH</u> <u>Cable</u> <u>CPR</u> <u>Class</u> <u>***</u>	<u>Breakout</u> <u>Termination</u> <u>****</u>
LC-	SC-	54-	12-	TB-	N	10-	CCA-	SG
<u>LC</u> = LC Simplex	<u>LC</u> = LC Simplex	<u>53</u> = Multimode OM3	<u>04</u> = 4 Fibres	<u>TB</u> = Tight Buffered	<u>N</u> = No pulling eye	<u>10</u> = 10Mtr	<u>B2CA</u>	<u>S</u> = Straight
<u>LCA</u> = LC APC Simplex	<u>LCA</u> = LC APC Simplex	<u>54</u> = Multimode OM4	<u>08</u> = 08 Fibres		<u>EY</u> = With Pulling Eye	<u>11</u> = 11Mtr etc	<u>CCA</u>	<u>SG</u> = Staggered (standard)
<u>SC</u> = SC Simplex	<u>SC</u> = SC Simplex	<u>55</u> = Multimode OM5	<u>12</u> = 12 Fibres				<u>ECA</u> = For Eca leave field blank	
<u>SCA</u> = SC APC Simplex	<u>SCA</u> = SC APC Simplex	<u>9</u> = Singlemode OS2	<u>16</u> = 16 Fibres					
<u>ST</u>	<u>ST</u>		<u>24</u> = 24 Fibres					
<u>FC</u>	<u>FC</u>							
<u>FCA</u> = FC APC	<u>FCA</u> = FC APC							

*Connectors

- For LC and SC Pre-Terms Simplex connectors are standard with Duplex supplied on request.

**Pulling Eye

- Pulling Eye is standard on lengths of 50Mtrs and over. Please specify if required on shorter lengths.

***LSOH Cable CPR Class

- B2CA = B2ca-s1a-d1-a1 cable
- CCA = Cca-s1a-d1-a1 cable
- ECA = Eca cable (leave field blank)
- See www.xsicute.com for our "Guide to CPR EuroClasses".

****Breakout Termination

- Staggered standard or with straight option. Breakouts lengths will vary depending on application so should be specified at time of order. See drawing on previous page for standard breakout lengths.

Tight Buffered Pre - Terms

<u>Cable:</u>	
Fibre / Construction	Tight Buffered 900um, Multimode OM1, OM3, OM4, OM5, Singlemode OS2, 4, 8, 12, 16 and 24 cores
Cable OD	4 core 5.9mm, 8 core 6.9mm, 12 core 7.5mm, 16 core 8.1mm, 24 core 9.3mm
Crush Resistance	1000(N) maximum
Maximum Long-Term Load	4 core 400(N), 8 core 441(N), 12 core 519(N), 16 core 608(N), 24 core 765(N)
Maximum Short-Term Load	4 core 1000(N), 8 core 1500(N), 12 core 1600(N), 16 core 2000(N), 24 core 2300(N)
Flexible Strength Members	Glass Yarns
Cable Sheath/CPR Compliance	Low Smoke Zero Halogen (HFFR-LS) Black to Construction Product Regulation (CPR) Eca, Cca-s1a-do-a1 or B2ca-s1a-d0-a1
Minimum Static Bend	10 x Cable Diameter
Minimum Dynamic Bend	15 x Cable Diameter
Temperature Range	Operational: -20°C to +60°C Storage: -20°C to +60°C Installation: -10°C to +60°C
Attenuation	OM1 62.5/125: @850nm ≥ 3.2 db/km @1300nm ≥ 0.8 db/km OM3 50/125: @850nm ≥ 2.8 db/km @1300nm ≥ 0.8 db/km OM4 50/125: @850nm ≥ 2.8 db/km @1300nm ≥ 0.8 db/km OS2 9/125: @1310nm ≥ 0.38 db/km @1383nm ≥ 0.38 db/km @1550nm ≥ 0.25 db/km
Overfilled Modal Bandwidth	OM1 62.5/125: @850nm ≥ 200 MHz.km @1300nm ≥ 500 MHz.km OM3 50/125: @850nm ≥ 1500 MHz.km @1300nm ≥ 500 MHz.km OM4 50/125: @850nm ≥ 3500 MHz.km @1300nm ≥ 500 MHz.km
Applicable Standards	TIA-598-C, IEC 60794-2-20, IEC 60794-1-21, IEC 60794-1-22, IEC 60332-1-2

Tight Buffered Pre - Terms

<u>Terminated Assembly:</u>	
Connectors	LC Simplex, SC Simplex, ST, FC, APC Low Loss with Zirconia Ceramic Ferrule. LC/SC Duplex on request. Factory Polished.
LC/SC Connector Colour	Multimode – Beige, Singlemode – Blue, Singlemode APC – Green
ST/FC Connector Body	Nickel plated brass
LC Strain Relief Boot Colour	Singlemode – White with White & Yellow heat shrink. Singlemode APC – Green, Multimode – Red & Black
SC Strain Relief Boot Colour	Singlemode – Blue, Singlemode APC – Green, Multimode – Red & Black
ST/FC Strain Relief Boot Colour	Singlemode – Yellow, Multimode – Black.
Labelling	Wrap around label near cable gland with unique serial number which shows test results online. Pre-Term part number label on clear tube/pulling sock. Additional labels as agreed with customer.
Protective Clear Tubing/Sock	Removable crush resistant clear PVC tube protects tails in transit and during pull process.
Pulling Eye (Standard on lengths of 50Mtr plus, optional on smaller lengths)	Metal Pulling Eye attached to Kevlar and removable Protective Tubing.
Cable Glands (for installing in patch panel)	M20 Black Plastic
Packaging	Lengths of 50Mtrs plus on a reel and boxed. Smaller lengths coiled and boxed.
Testing	Supplied with test data showing: Multimode – Insertion Loss Singlemode – Insertion and return loss Testing to IEC 61280-4-1