

UCT



USB Cable Test Module (UCT) Optional Module

The MSolutions USB cable test module allows for integrators to gain a deeper understanding of their USB connectivity through qualification of the cabling used within installations. The tester allows for the DC measurement of the internal wiring. Determine the USB-C features, USB2.0 (480Mbps), USB3.1 (Gen1 up to 5Gbps), USB3.1 (Gen2 up to 10Gbps), charging, monitor/laptop power, audio support, video and quality. The module has the capability of providing accurate test measurements for the following USB cable types: USB-C to USB-C connections, USB-C to USB3.0 (Type A) connections. The tester will identify and qualify the USB version that the cable has been manufactured to (i.e. 1.0, 1.1, 2.0, 3.0, DP, ETH)

The module has the capability to measure the power consumption of a USB device by connecting the module between the USB device and the Host - which will allow for the user to view the power draw by the device from the Host.

AVoIP



AV over IP Network Capability Test Module

The MSolutions AV over IP network capability test module further enhances the extensive testing capabilities of the MS-104B MS-TestPro with the added benefit of qualifying a CATx link for the increasingly popular AV over IP method for AV distribution. This optional tester module provides the integrator a snapshot of the AVoIP switch configuration for MAC / IP addresses ping time and current config, present nodes on the network with Simple Network Management Protocol (SNMP Information). IGMP snooping capabilities allow for transparency of VLAN set up, and immediate / fast leave settings.integrators.

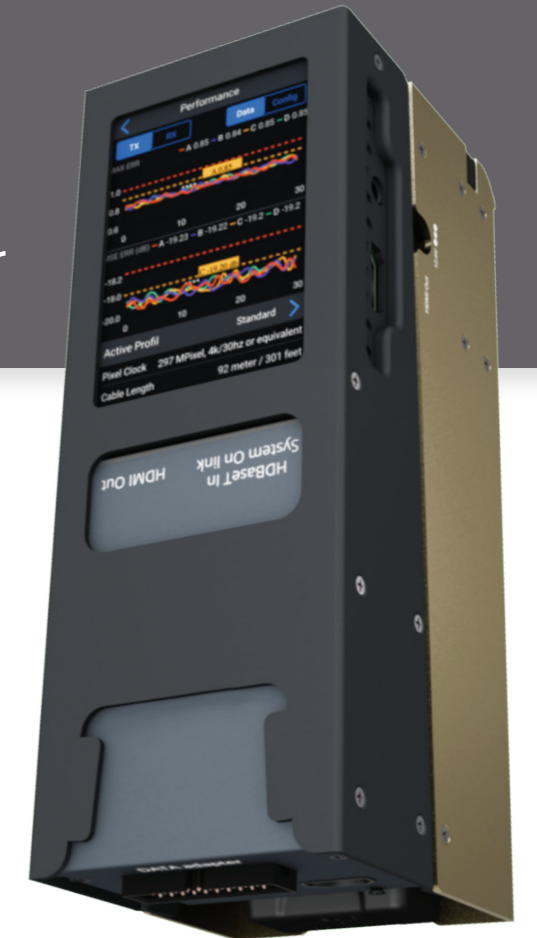
The world's only official HDBaseT™ diagnostics tester

MS-104B

HDBaseT Spec 1.0 Tester - battery powered, WiFi for browser based management, 3.5" colour touchscreen, 4K 60 4:4:4 HDMI pattern generator, web-GUI

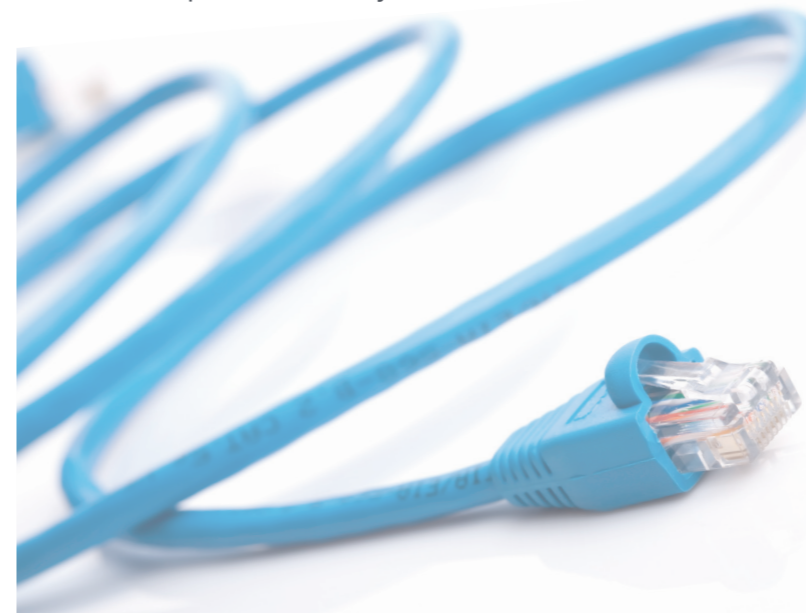
The MS-TestPro MS-104B is the only HDBaseT tester that is all-inclusive, 100% reliable, portable and affordable, making it an indispensable tool for AV installers and integrators. It provides AV professionals with all the information needed while in the field to enable them to verify the integrity and stability of every system tested down to the last detail.

Moreover, the MS-TestPro generates a report including all the parameters necessary to certify link quality and status for signals up to 4K Ultra High Definition. The report can then be saved in the unit, sent by email, or downloaded from the cloud to a computer, tablet or smartphone for use by both installer and end-user.



Key Features

- The ONLY HDBaseT™ certified tester in the market
- Effortless certification for 4K cable infrastructure in less than 10 seconds
- Mains/battery powered unit – 4 hours from a single charge
- Built in WiFi access point for remote testing capabilities
- Integrated video guides and user manual
- Log-file analysis provided by an MSolutions professional
- CloudOS connectivity for centralized visibility of testers
- Expansion modules cover: HDBaseT™ Spec 2.0, DC Resistance, HDMI Cable Testing, USB Cable Testing, Expansion for AV over IP testing (via firmware update)



Spec 2.0



MS-2310

HDBaseT Spec 2.0 Modules - TX and RX unit - HDBaseT Spec 2.0 based

HDBaseT Spec. 2.0 is an advanced profile for HDBaseT systems. Where HDBaseT 1.0 addresses only the physical and link layers of HDBaseT switching, Spec. 2.0 adds networking, switching, and control-point capabilities. Among other enhancements, it improves performance margin and optimizes existing infrastructures and bandwidth. The Spec. 2.0 module, available for use with the MS-TestPro, enables users to test and certify all the added functions and capabilities of HDBaseT Spec. 2.0 systems with the same unsurpassed level of quality and reliability that the MS-TestPro is known for among HDBaseT 1.0 installers and integrators.

Spec 3.0



MS-3000

HDBaseT Spec 3.0 Modules - TX and RX unit - HDBaseT Spec 3.0 based

HDBaseT Spec. 3.0 is the most recent and technically advanced profile for HDBaseT systems. Where HDBaseT 1.0 addresses only the physical and link layers of HDBaseT switching, Spec. 3.0 is an uncompressed, HDMI 2.0 4K 60Hz 4:4:4, has networking, switching, and control-point capabilities. Among other enhancements, it improves performance margin and optimizes existing infrastructures and bandwidth (18Gbps). The new Spec. 3.0 module, available for use with the MS-TestPro, enables users to test and certify all the added functions and capabilities of HDBaseT Spec. 3.0 systems with the same unsurpassed level of quality and reliability that the MS-TestPro is known for among HDBaseT 1.0 installers and integrators.

DCR



DC Resistance

DCR measures DC Resistance of CATx cables, to check cable quality & ability to provide a sufficient level of PoE / PoH (Power over HDBaseT) powering

The optional MS-TestPro DC Resistance and Looper modules, can be used to qualify the DC resistance of a CATx link, and to check the cables ability to provide a sufficient level of PoH (Power over HDBaseT). The DCR will check for: 1. Loop Resistance which represents the DC loop resistance in Ohm (Ω) of a cable, and is calculated as the sum of the DC resistance of the two conductors in a pair. 2. Parallel DC Resistance Unbalanced for the parallel resistance of the CATx two conductors in each cable pair. For each pair, the difference is expressed in ohms (Ω). 3. Pair-to-Pair Resistance Unbalanced which is the difference in DC resistance between all four twisted pairs in the cable. For each pair, the difference is expressed in ohms (Ω).

HCT



HDMI Cable Test Module

HCT ensures compliance to Standard / High-Speed bandwidth requirements including 8K/60Hz (48Gbps) support

The optional HDMI Cable Test Module (HCT) enables ProAV integrators to easily evaluate cabling compatibility to the HDMI standard - including bandwidths (48 / 18 / 9 / 4.5Gbps), resolutions (HDR, UHD, HD), passive cable wiring quality, pin connectivity, and CEC support. The addition of these modules to MSolutions' industry-leading HDBaseT testing device, offers an end-to-end ProAV testing solution from source to sink with its efficient, time-saving HDMI cable testing modules.

