

High-End Server Rack Enclosures

R4000 Series with M6 Threaded Rails

A new generation for server rack enclosures with a multitude of added features. Its hidden assembly screws and rolled edges give the cabinet a sleek, minimalistic finish.



- Adjustable M6 threaded front and back rails
- Removable doors and side panels
- Door can be unpinned and rotated
- Integral vertical cable management bars
- Multiple mounting options for castors and feet
- Customisable top and bottom
- Earth points
- Bayable

R4066 Series: 600mm Wide x 600mm Deep

Available Unit Sizes: 18U, 22U, 32U, 37U, 42U or 47U

Mounting Depths: Min: 150mm / Max: 500mm

Available Front Doors: Glass or Perforated Steel

R4086 Series: 600mm Wide x 800mm Deep

Available Unit Sizes: 22U, 32U, 37U, 42U or 47U

Mounting Depths: Min: 150mm / Max: 700mm

Available Front Doors: Glass or Perforated Steel

R4108 Series: 600mm Wide x 1000mm Deep

Available Unit Sizes: 22U, 32U, 37U, 42U or 47U

Mounting Depths: Min: 150mm / Max: 900mm

Available Front Doors: Glass or Perforated Steel

R4088 Series: 800mm Wide x 800mm Deep

Available Unit Sizes: 22U, 27U, 32U, 35U, 37U, 42U, 45U or 47U

Mounting Depths: Min: 150mm / Max: 700mm

Available Front Doors: Glass or Perforated Steel

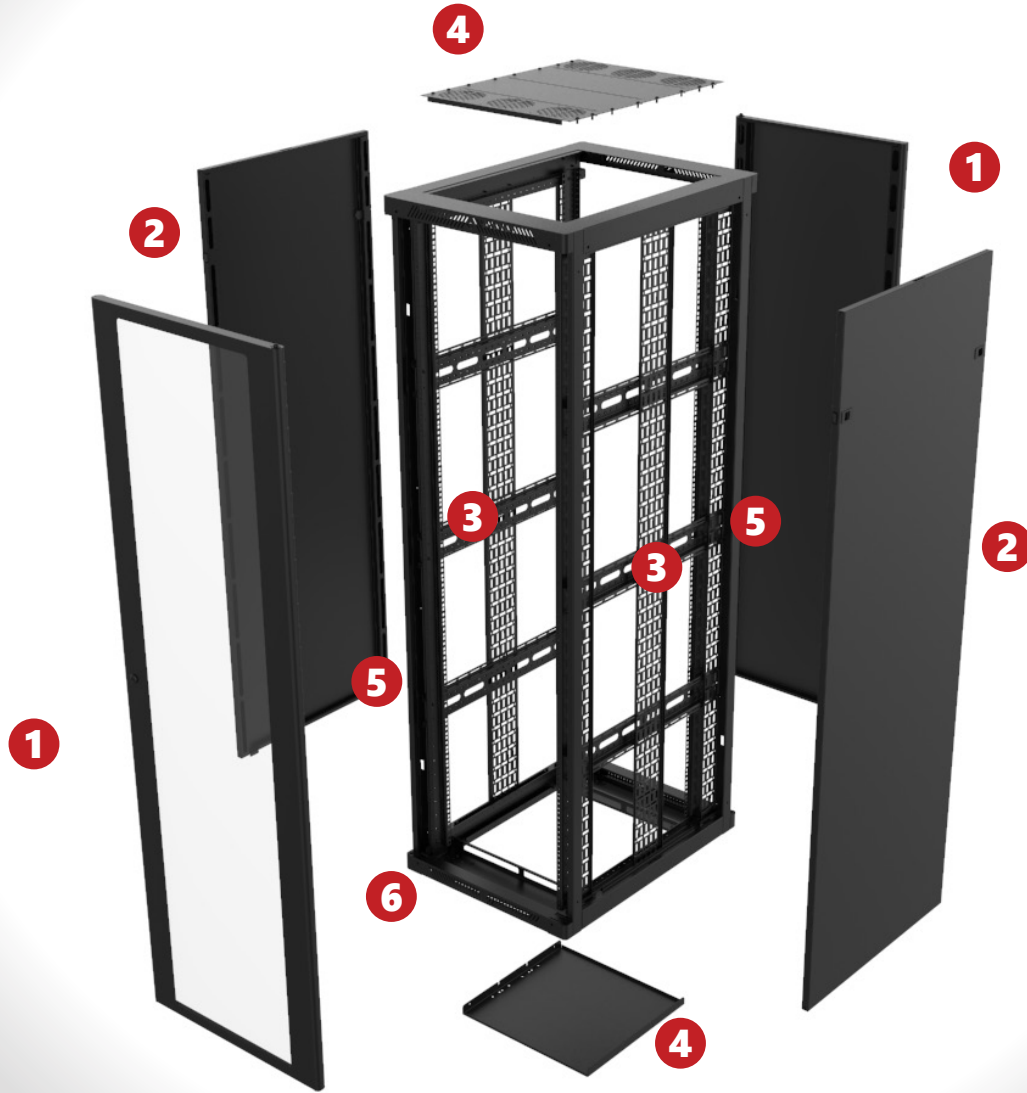
R4106 Series: 800mm Wide x 1000mm Deep

Available Unit Sizes: 22U, 27U, 32U, 35U, 37U, 42U, 45U or 47U

Mounting Depths: Min: 150mm / Max: 900mm

Available Front Doors: Glass or Perforated Steel

600mm Wide Enclosures



Front & Back Doors

- Reversible and removable
- Concealed door handles
- Glass, plain or vented steel doors
- Replacement lock available*



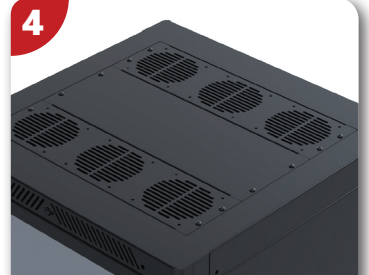
Side Panels

- Easy to open with slam latches
- Removable
- Vented Side Panels Available
- Optional side panel locks*



Cable Management

- Corner posts feature integral cable management
- Optional, adjustable vertical cable management trays



Customisable

- Modular Top & Bottom Units from 6U to 18U available on the top and the bottom of each enclosure



Threaded Rails

- Adjustable mounting depth from 150mm to 900mm.
- No more cage nuts with the M6 threaded rack rails



50mm Castors

- 41mm x 41mm hole patterns for 50mm castors.
- Use our new W0950 - 50mm Castor/Foot.



75mm & 100mm Castors

- 80mm x 60mm hole patterns for 75mm & 100mm castors.



Adjuster feet

- M12 holes for adjuster feet.
- See part number R8295 for sets of adjuster feet from 30mm to 95mm.

600mm Wide x 600mm Deep Rack Enclosures

Part Numbers		Dimensions		
Glass Door	Vented Door	Size (U)	Height	Weight
R4066-18UK	R4066-V-18UK	18U	902mm	55kg
R4066-22UK	R4066-V-22UK	22U	1.08m	62kg
R4066-32UK	R4066-V-32UK	32U	1.52m	76kg
R4066-37UK	R4066-V-37UK	37U	1.75m	83kg
R4066-42UK	R4066-V-42UK	42U	1.97m	90kg
R4066-47UK	R4066-V-47UK	47U	2.19m	97kg

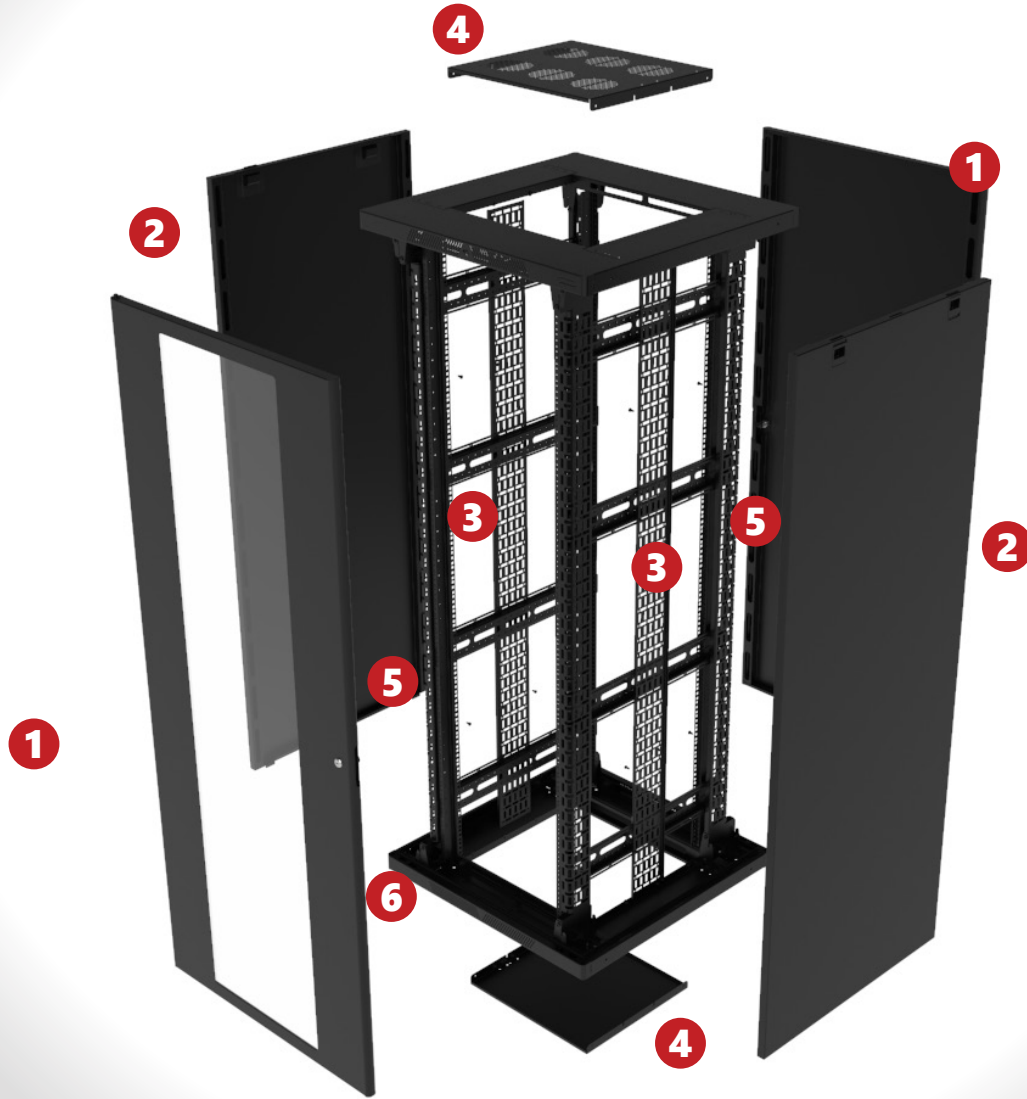
600mm Wide x 800mm Deep Rack Enclosures

Part Numbers		Dimensions		
Glass Door	Vented Door	Size (U)	Height	Weight
R4086-22UK	R4086-V-22UK	22U	1.08m	68kg
R4086-32UK	R4086-V-32UK	32U	1.52m	88kg
R4086-37UK	R4086-V-37UK	37U	1.75m	98kg
R4086-42UK	R4086-V-42UK	42U	1.97m	108kg
R4086-47UK	R4086-V-47UK	47U	2.19m	118kg

600mm Wide x 1000mm Deep Rack Enclosures

Part Numbers		Dimensions		
Glass Door	Vented Door	Size (U)	Height	Weight
R4106-22UK	R4106-V-22UK	22U	1.08m	75kg
R4106-32UK	R4106-V-32UK	32U	1.52m	100kg
R4106-37UK	R4106-V-37UK	37U	1.75m	112kg
R4106-42UK	R4106-V-42UK	42U	1.97m	125kg
R4106-47UK	R4106-V-47UK	47U	2.19m	140kg

800mm Wide Enclosures



Front & Back Doors

- Reversible and removable
- Concealed door handles
- Glass, plain or vented steel doors
- Replacement lock available*



Side Panels

- Easy to open with slam latches
- Removable
- Vented Side Panels Available
- Optional side panel locks*



Cable Management

- Corner posts feature integral cable management
- Optional, adjustable vertical cable management trays



Customisable

- Modular Top & Bottom Units from 6U to 18U available on the top and the bottom of each enclosure



Threaded Rails

- Adjustable mounting depth from 150mm to 900mm.
- No more cage nuts with the M6 threaded rack rails



50mm Castors

- 41mm x 41mm hole patterns for 50mm castors.
- Use our new W0950 - 50mm Castor/Foot.



75mm & 100mm Castors

- 80mm x 60mm hole patterns for 75mm & 100mm castors.



Adjuster feet

- M12 holes for adjuster feet.
- See part number R8295 for sets of adjuster feet from 30mm to 95mm.

800mm Wide x 800mm Deep Rack Enclosures

Part Numbers		Dimensions		
Glass Door	Vented Door	Size (U)	Height	Weight
R4088-22UK	R4088-V-22UK	22U	1.1m	85kg
R4088-27UK	R4088-V-27UK	27U	1.32m	93kg
R4088-32UK	R4088-V-32UK	32U	1.54m	109kg
R4088-35UK	R4088-V-35UK	35U	1.67m	117kg
R4088-37UK	R4088-V-37UK	37U	1.76m	120kg
R4088-42UK	R4088-V-42UK	42U	1.98m	131kg
R4088-45UK	R4088-V-45UK	45U	2.12m	137kg
R4088-47UK	R4088-V-47UK	47U	2.21m	141kg

800mm Wide x 1000mm Deep Rack Enclosures

Part Numbers		Dimensions		
Glass Door	Vented Door	Size (U)	Height	Weight
R4108-22UK	R4108-V-22UK	22U	1.1m	95kg
R4108-27UK	R4108-V-27UK	27U	1.32m	106kg
R4108-32UK	R4108-V-32UK	32U	1.54m	120kg
R4108-35UK	R4108-V-35UK	35U	1.67m	130kg
R4108-37UK	R4108-V-37UK	37U	1.76m	133kg
R4108-42UK	R4108-V-42UK	42U	1.98m	144kg
R4108-45UK	R4108-V-45UK	45U	2.12m	151kg
R4108-47UK	R4108-V-47UK	47U	2.21m	155kg