

Parameters

Electrical Parameters:

Buspro power supply	DC18-30V
Buspro power consumption	30mA/DC24V
IR transmit frequency	38KHz
Detection diameter	Φ8m (Installation height:3m)
IR emission distance	4m
Temperature detection range	-20°C~60°C
Illumination detection range	0~500Lux

Environmental Conditions:

Working temperature	-5°C~+45°C
Working relative humidity	Up to 90%
Storage temperature	-20°C~+60°C
Storage relative humidity	Up to 93%

Approved:

CE

RoHS

Product Information:

Dimensions	84mm (diameter) ×37.5mm
Net weight	55.4g
Housing material	ABS
Installation	Ceiling mount
Protection degree	IP20

HDL Buspro Cable Guide

HDL Buspro	HDL Buspro/KNX
DC24V	Red
COM	Black
DATA-	White
DATA+	Yellow

Important Notes

- **Installation** – Indoor, keep it away from AC outlet and heat source
- **Environment temperature** - Make sure the temperature is below 36°C(PIR)
- **Buspro cable** - HDL Buspro/KNX cable
- **Buspro connection** - Series connection (hand-in-hand)
- **Installation** – Ceiling mount

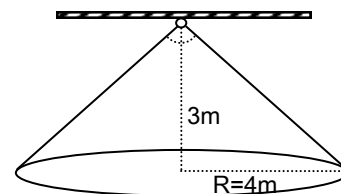
Overview



HDL-MSP08M.4C 8 in 1 sensor includes PIR motion sensor, temperature sensor, LUX sensor, dry contact, etc. It can satisfy different requirements according to different logics. It supports HDL security mode. It can load IR code from HDL Buspro Setup Tool and send the IR code to control the target

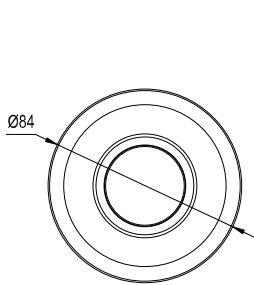
Functions

- Built-in PIR sensor, LUX sensor, dry contact, temperature sensor.
- Logic inputs include LUX sensor, temperature sensor, PIR sensor, two dry contact inputs, external conditions.
- Two logic relations: OR, AND.
- Adjustable infrared motion sensitivity, range is 1-10.
- It has 20 logic blocks. The range of universal switch number in logic is 201-240, each logic has 2 universal switch numbers. The universal switch has Auto-Off function, delay time is 1-3600s.
- Both true logic and false logic can trigger the targets respectively. Up to 10 logic blocks to trigger the control target.
- Up to 240 IR sending control targets, the universal switch number is 1-240. It can upload multiple IR codes.
- Support online upgrade from HDL Buspro.
- Constant LUX function.

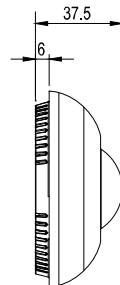


Motion detect range

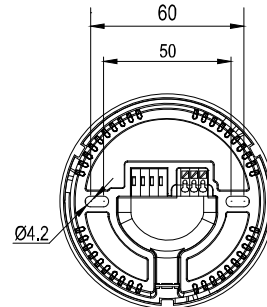
Dimensions and Wiring



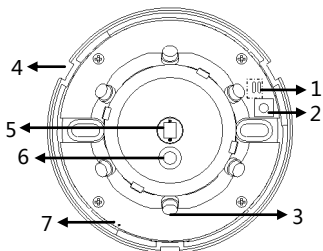
Front View



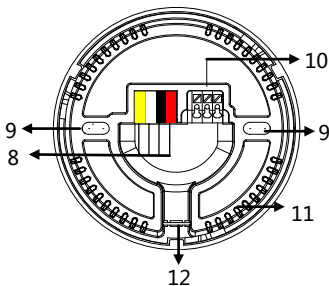
Side View



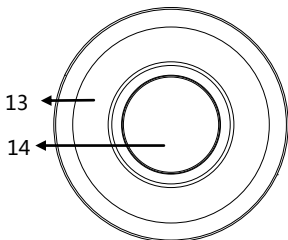
Back View



Inside View



12



Cover

1. LED indicator and IR indicator

when the module is working properly, it will turn blue. And it will turn red when it detects the motion

Notes: Indicators can be set from HDL Buspro Setup tool

2. Module address setting

Keep pressing it for 3s, it will turn blue, go to "Address management"-"Address modification" of HDL Buspro Setup tool to change the address.

3. IR emitter

4. Slot

5. PIR sensor

6. LUX sensor

7. Temperature sensor

8. HDL Buspro, from right to left: DC24V, COM, DATA -, DATA+

9. Screw holes

10. Dry contact 1, dry contact 2

11. Ventilation holes

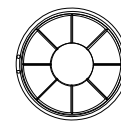
12. Remove it for wires

13. Emitter window

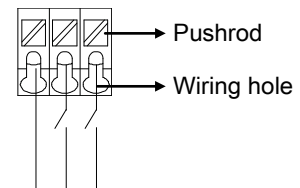
14. Fresnel lens

You need to open the cover, and then fix by screws.

Finally, put on the cover.



Parts: Angle cover, you can remove some of them according to the installation, to enlarge or narrow down detection zone.



Dry contact 1,2

Dry contact cable requirement:

Wire: 0.5~0.75mm²

Length : 8.5~10mm

Suggests to use the shield cable, the length should not exceed 20m

Dry contact connection:

Use the screwdriver or others to press the pushrod, the wiring hole will open

The wires are put in the wiring hole, and then loosen the pushrod, the wires will be locked.

Safety Precautions



- The screw down torque should not exceed 0.1Nm.
- Ensure that the Buspro interface is correctly connected to the module.
- Do not connect the module to AC power.
- Do not let the module come into contact with hazardous liquids or corrosive gases.

Package Contents

- Datasheet ×1
- The New 8 In 1 Sensor (HDL-MSP08M.4C) ×1

