

Parameters

Electrical Parameters:	
Buspro power supply	DC12-30V
Buspro power consumption	20mA/DC24V
PIR sensing range in diameter	6m (Installation Height: 3m)
Range for LUX Sensor	0-500lux
Environmental Conditions:	
Working temperature	-5°C~45°C
Working relative humidity	Up to 90%
Storage temperature	-20°C~+60°C
Storage relative humidity	Up to 93%
Approved:	
CE	
RoHS	
Product Information:	
Dimensions	63(Diameter)×46.6(mm)
Weight	91(g)
Housing material	Infrared lens, ABS
Installation	Ceiling mounted
IP Protection	IP20

Important Notes

- Installation location — If using PIR function in door, please keep it away from AC outlets and heat source
- Environment temperature — If using PIR function, please make sure the temperature is below 36°C
- Detect target – Only detect moving objects with thermal radiation
- Buspro cable — HDL Buspro/KNX Cable, 0.8mm single- core copper cable
- Buspro connection — Series connection (hand-in-hand)

HDL Buspro Definition for Cable

HDL Buspro	HDL Buspro/KNX
DC24V	Red
COM	Black
DATA-	White
DATA+	Yellow

Overview

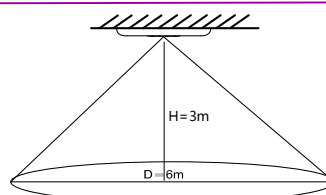


HDL-MSP02.4C ceiling mounted PIR sensor, includes PIR motion sensor, LUX sensor, logic block. the logic block can combine all of sensor for different application, Support HDL security mode and command.

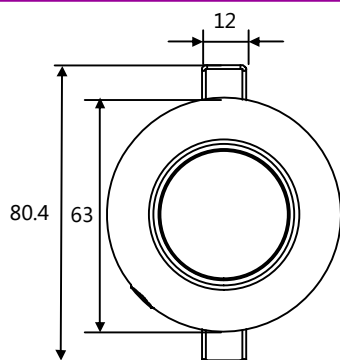
Functions

- Equipped with brightness sensor, PIR sensor and universal switch can be used as logic conditions.
- 2 Logic relations: OR, AND.
- 24 Logic Blocks function, up to 20 control targets in each logic block.
- Sensitivity adjustable, range from 1 to 10.
- Universal switch number were assigned to 201-248 in logic conditions, 2 switch numbers for each logic, universal switch has auto-off function (from 1 to 3600 seconds).
- Logic can trigger the control target no matter it's valid or not.
- Security function, need to be used with the security module.
- Supports upgrade from HDL Buspro.

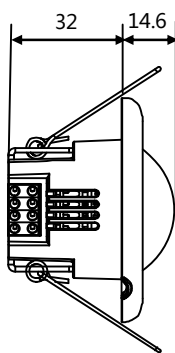
PIR Sensing range in diameter



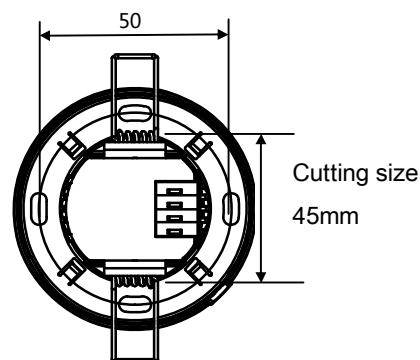
Dimensions and Wiring



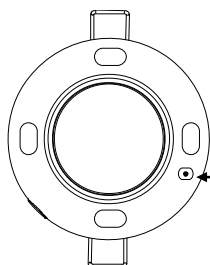
Front view



Side view



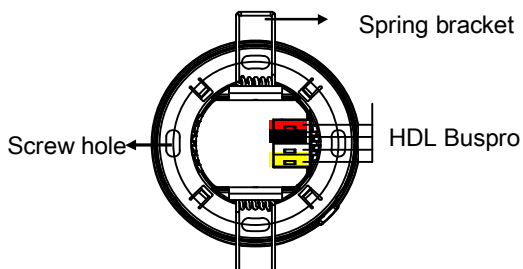
Back view



Interior design

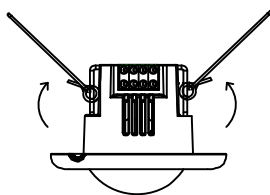
Indicator for module: Keep pressing it for 3 seconds, can modify the address of the module in HDL Buspro Pro Set Up Software.

Indication: Can set to indicate the LED or not. If yes, when detecting some movement, the LED will turn on during this process; if not, whether there is movement or not, it always keeps off.



Spring bracket installation

Spring bracket installation: it is used to install the sensor into thin ceiling, wooden boards etc., make a round hole with diameter of 45mm, then get fasten it the spring bracket.



Screw installation: it is used to install the sensor into special back box, thick wall or wooden ceiling that cannot use spring bracket. You must remove the spring bracket when install the sensor by screw.

Safety Precautions



- The screw down strength should not exceed 0.1Nm.
- Do not make wrong connection on Buspro interface, it will damage the Buspro interface of this module.
- Do not get AC power into Buspro wire, it will damage all of devices in the system.
- Avoid contact with liquids and corrosive gases.

Packing List

- | | |
|----------------------------------------------|----|
| ■ Datasheet | ×1 |
| ■ Ceiling Mounted PIR Sensor (HDL-MSP02.4C) | ×1 |

