



EMERGENCY DOOR RELEASE

EDR

The new range of Emergency Door Release Bought to you by RGL.



EDR



RESETKEY-N



EDR-COVER-N

(only if you require a replacement cover)

SPECIFICATION

EDR-N

- Single pole (EDR-1N)
 - 1 x Pole (Positive switching)
- Double pole (EDR-2N)
 - 1 x Pole (Positive switching)
 - 1 x Pole (Changeover contact)
- Triple pole (EDR-3N)
 - 1 x Pole (Positive switching)
 - 2 x Pole (Changeover contact)
- Includes audible/LED (selectable)
- 12/24V operation
- Voltage 12/24 VDC @ 30/45mA
- Operating temperature: -10C to 55C
- IP24 Rated
- Resettable

FEATURES

EDR-N

- All one colour
- Easy clean surface (ideal for hospitality areas)
- Easy cable entry from sides or rear
- Screw footprint for surface fitting onto standard back box
- Key reset operation (not replacement glass)
- Internal use
- Emergency Door Release - permanently lit.
- Changes to red on activation/alarm
- Includes plastic front covers which flip up for operation

OTHER PRODUCTS

KPX1000



MEXT-EBGB



DIMENSIONS

EDR-N

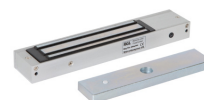
- 87x87x60 (mm)
- 248g (Boxed)
- 162g (Unboxed)

CONTENTS

EDR-N

- Emergency Door Release
- EDR-COVER-N
- Security Screws
- Allen Key
- Mounting Plate
- 2 RESETKEY-N

ML600



120ISM-1



Manufactured by a BSIA Member