

Parameters

Electric Parameters:	
BUS power supply	DC12-30V
BUS power consumption	25mA/DC24V
Range of temperature sensor	-20°C~36°C
Range of LUX sensor	0~5000Lux
Range of humidity sensor	20°C~95°C
Environmental Conditions:	
Working temperature	0°C~45°C
Working relative humidity	Up to 90%
Storage temperature	-20°C~+60°C
Storage relative humidity	Up to 93%
Approved	
CE	
RoHS	
Production information:	
Dimensions	80(Diameter)×32(mm)
Weight	92.5(g)
Housing material	ABS
Installation	Ceiling mount
IP Protection	IP20

Important Notes

- Bus cable — CAT5E or HDL-Bus/KNX cable.
- Bus connection — Series connection (hand-in-hand).
- Installation — Indoor and ceiling-mount, keep it away from AC outlet.

HDL-Bus Definition for Cable

CAT5/CAT5E	HDL-BUS	HDL- Bus/KNX
Brown/ Orange	DC24V	Red
Brown white/ Orange white	COM	Black
Blue white/Green white	DATA-	White
Blue/ Green	DATA+	Yellow

Overview

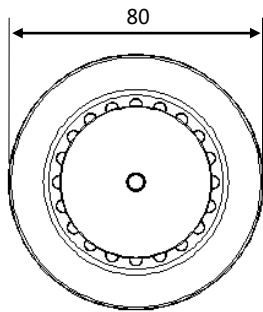


SB-CMS-THL is a sensor with built-in temperature sensor, LUX sensor, humidity sensor and dry contact input. The logic in the sensor can manage all different conditions of sensors, to control different targets and achieve different functions. The sensor supports HDL security function and security command.

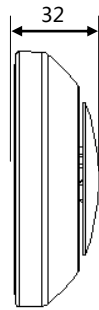
Functions

- Built-in LUX sensor, temperature sensor, humidity sensor, 2 channels dry contact inputs, 2 universal switch, Logic
- 2 logical relations: OR, AND
- It has 24 logic blocks, the output is to control the targets
- The range of universal switch number in logic function is 201-248, each logic has 2 universal switch numbers.
- Multiple control targets: scene switch, sequence switch, universal switch, single channel lighting control, broadcast scene or channel, curtain switch, GPRS, panel control, security, music play etc.
- Supports upgrade from HDL Bus.

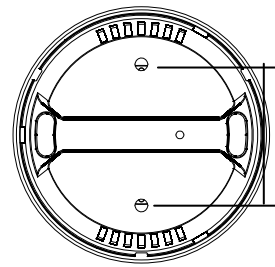
Dimensions and Wiring



Front view



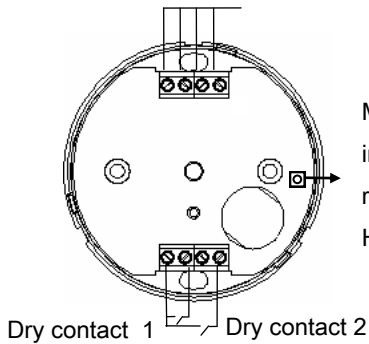
Side view



Screw holes 44.5mm

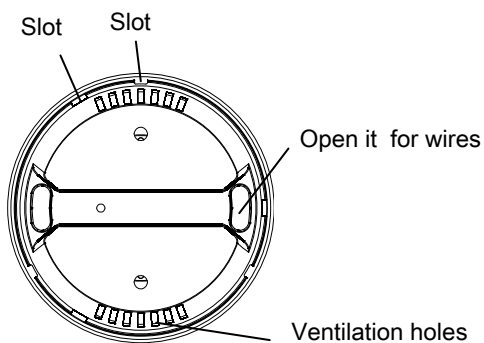
Back view

HDL-BUS, from left to right GND,485-,485+,DC24V



Inside view

Module indicator, flickers when the module is working properly. Keep pressing for 3 seconds, user can read and modify the address of the module in the HDL-Bus software.



Safety attention



- The screw down strength should not 0.1Nm.
- Do not make wrong connection on Bus interface, it will damage the Bus interface of this module
- Do not get AC power into Bus wire , it will damage all devices in the system
- Avoid contact with liquids and corrosive gases.

