

SP50 High-Rise FTTx Multidwelling Unit (MDU) Terminal

The SP50 is a fibre optic distribution and termination enclosure designed to be installed at the entrance basement or teleco room of a Multi Dwelling Unit (MDU) building, particularly designed for its main use in the Fiber to the Home networks for high multi dwelling units (MDU). As the interface between the optical access network of the operator and the internal distribution cable within the building. It is used for splicing or routing. Up to 48 customers drops can be handled. The enclosure impermeability matches to the requirement of outdoor applications IP65.



IP 65



Up to 144 FO



Applications

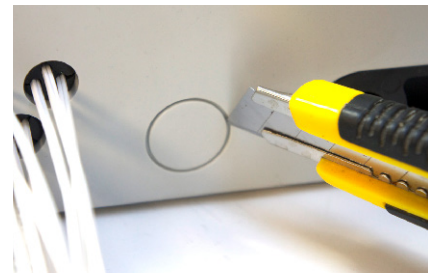
SP50 is ideally suited to multi-dwelling units (MDU), cellsites, campuses, strip malls, business parks and other applications where the customer requires high-capacity fibre bandwidth for wireless backhaul, private networks or data and video broadband services. Their convenient form factor saves space in basements, huts, telecom equipment closets and other indoor or outdoor locations.



48 ports for Drop Cables



Oval port for the loop cable

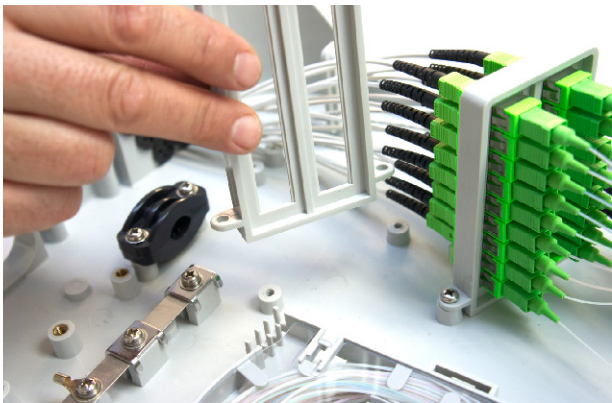


Third entry port

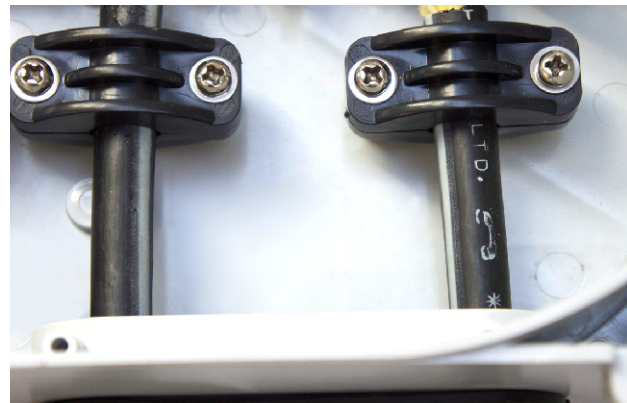
SP50 High-Rise FTTx Multidwelling Unit (MDU) Terminal

Features

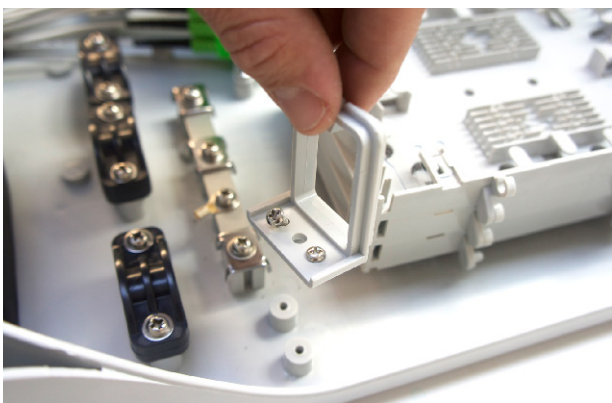
- User friendly splicing and patching box, consisting of base, fiber management support and a cover
- Up to 54 adapters in SC shape (LC, SC, E2000) mounted inside of the enclosure
- Up to 144 FO (6 splice trays). The maximum capacity of splice trays is 24 fibres.
- 3 cable entries: 48 ports for drop cables and 3 ports for fibre optical cable.
An oval port for the loop cable, or 2 cables of maximum 20 mm diameter
12 ports of 14 mm diameter. Each port can hold 4 drop cables (= 48 cores).
- The reserved port is for cables of maximum 18 mm diameter
- Able to store excess lengths of cable of at least 3 m.
- Supplied with adapters and preconnectorized Intelligent Cassette System equipped with MS201 Mechanical Splice, KeyQuick® Pigtailed, KeyQuick® Splitters, or PLC Splitter Cassettes
- Key lockable cover
- UV radiation resistant housing
- Wall and pole mounting
- Enclosure impermeability matches the requirement of outdoor applications



Removable adapter module



Cable mounting bracket



Removable integrated cable routing



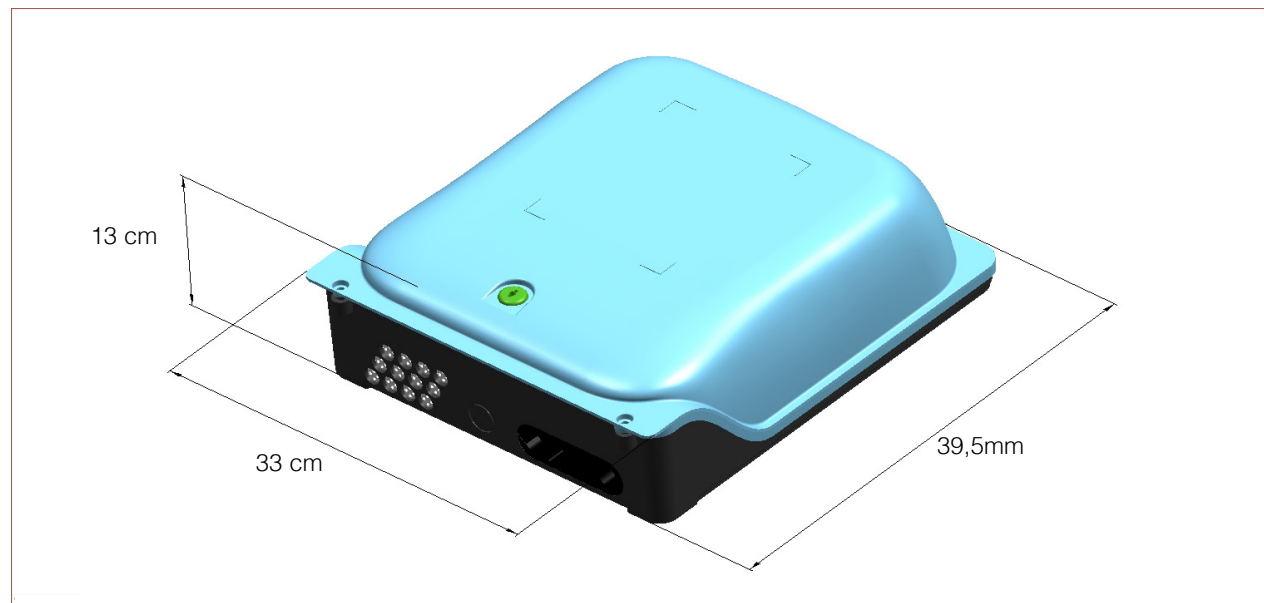
Removable splice cassette ICS1 24 FO Capacity



SP50 High-Rise FTTx Multidwelling Unit (MDU) Terminal

Specifications

Attribute	Values
Dimensions (B x L x H)	39,5 x 33 x 13 cm
Capacity of adapters	54 x LC, SC and E-2000. 54 x hybrid FC/SC
Capacity of splice cassettes	Max. 6
Maximum (Ø) cable	12mm
Material	ABS
Color	RAL 7035, light gray
Mounting type	Wall, Pole
Ingress protection degree	IP65
Temperature resistance	-40°C up to 65°C
Flamability rating	UL 94V-0
UV resistance	resistant
Free of halogen	yes

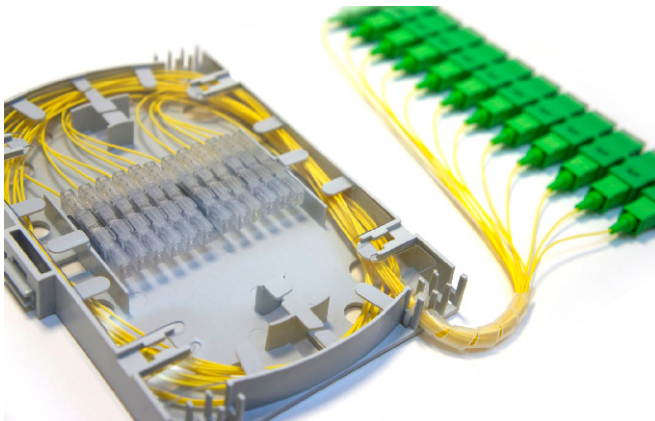


SP50 High-Rise FTTx Multidwelling Unit (MDU) Terminal

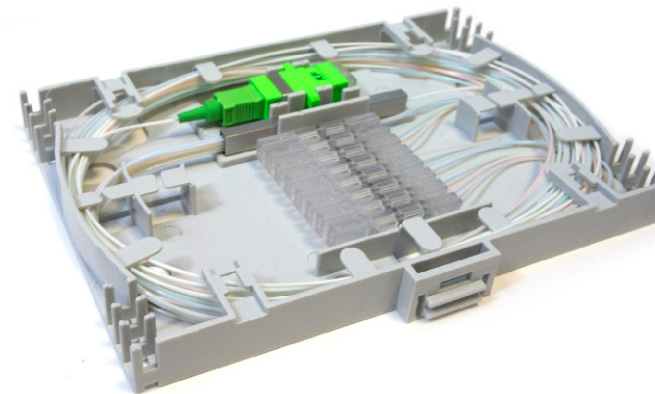
Intelligent Cassette System ICS1

The SP50 can be provided including an intelligent cassette system. It is a modular and easy to use system configured following the concept of several components put together without tools, requiring the minimal skill to install and non-costly specialized tools.

Several kinds of cassette configurations are available to support the fibre infrastructure on a top level. With preconnectorized KeyQuick® Pigtailed, KeyQuick® Splitters, and KeyQuick® Mechanical Splices. Additionally, a cassette preconnectorized with PLC Splitters is available.



Example: ICS1 equipped with KeyQuick® Pigtailed x 12 pieces SC/APC



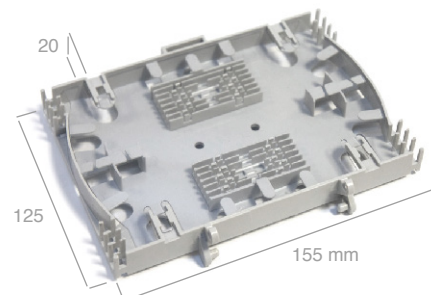
Example: ICS1 equipped with KeyQuick® Splitter x 1 piece 1 x 8

A concept that allows to optimize the installation, reducing possible human mistakes, assuring that terminated fibres are optically performed, reducing the installation time considerably, and improving the total fibre link loss (the number of splices or connectors is reduced).

The ICS1 splice cassette with preconnectorized KeyQuick® Splitters is always provided with 1 SC APC simplex adapter. Connecting a Visual Fault Locator to the SC APC adapter is a simple and fast way to accelerate end-to-end connection checking and to allow optimal mechanical splitters performance. It visually locates any fault in some of the KeyQuick® Splitters connections by a visible red light, which allows the technical installer to remake the connection quickly in the field. This solution offers a straightforward deployment technique using preconnectorized KeyQuick® mechanical technology and running from a building entry point to each individual unit.

Specifications

Attribute	Values
Capacity for Intelligent Cassette System	
ICS1 – KQMS mechanical splice cassette	8, 12, 16
ICS1 – KQPT KeyQuick pigtailed cassette	8, 12, 16
ICS1 – PLC splitter cassette	1x4, 1x8, 1x16, 1x32, 1x64
ICS1 – KQSP KeyQuick splitter cassette	1x4, 1x8, 1x16
ICS1 Dimension	125 x 155 x 20 mm



SP50 High-Rise FTTx Multidwelling Unit (MDU) Terminal

Ordering Information:

SP50

P/N	Description
SP50	SP50 High Rise MDU Terminal with 2 ICS1, 48 drops / 144 FO. IP65, safety lock



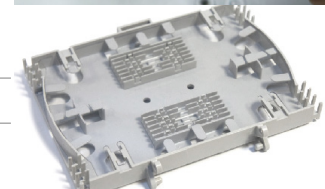
SP50 Adapter Module

SPS50A	SP50 Adapter Module SC/APC simplex x 18 pieces
SPS50B	SP50 Adapter Module SC/PC simplex x 18 pieces
SPS50C	SP50 Adapter Module LC/APC duplex x 18 pieces
SPS50D	SP50 Adapter Module LC/PC duplex x 18 pieces



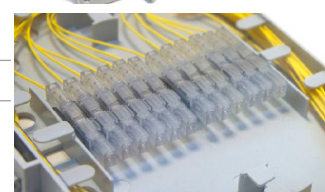
ICS1 Splice Cassette for SP50 and SP60

ICS1	ICS1 Splice Cassette basic for 24 fusion splices
------	--------------------------------------------------



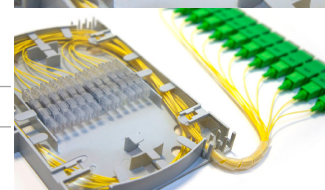
ICS1 equipped with KeyQuick® MS201

ICS1 2008	ICS1 Splice Cassette equipped with 8 MS201
ICS1 2012	ICS1 Splice Cassette equipped with 12 MS201
ICS1 2016	ICS1 Splice Cassette equipped with 16 MS201



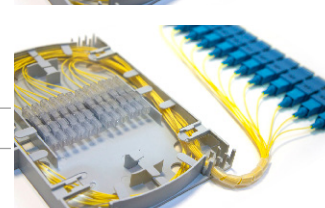
ICS1 equipped with KeyQuick® Pigtailed SC APC

ICS1 3008A	ICS1 equipped with 8 preconnectorized KeyQuick Pigtail SC APC
ICS1 3012A	ICS1 equipped with 12 preconnectorized KeyQuick Pigtail SC APC
ICS1 3016A	ICS1 equipped with 16 preconnectorized KeyQuick Pigtail SC APC



ICS1 equipped with KeyQuick® Pigtailed SC PC

ICS1 3008B	ICS1 equipped with 8 preconnectorized KeyQuick Pigtail SC PC
ICS1 3012B	ICS1 equipped with 12 preconnectorized KeyQuick Pigtail SC PC
ICS1 3016B	ICS1 equipped with 16 preconnectorized KeyQuick Pigtail SC PC



ICS1 equipped with KeyQuick® Pigtailed LC APC

ICS1 3008C	ICS1 equipped with 8 preconnectorized KeyQuick Pigtail LC APC
ICS1 3012C	ICS1 equipped with 12 preconnectorized KeyQuick Pigtail LC APC
ICS1 3016C	ICS1 equipped with 16 preconnectorized KeyQuick Pigtail LC APC

ICS1 equipped with KeyQuick® Pigtailed LC PC

ICS1 3008D	ICS1 equipped with 8 preconnectorized KeyQuick Pigtail LC PC
ICS1 3012D	ICS1 equipped with 12 preconnectorized KeyQuick Pigtail LC PC
ICS1 3016D	ICS1 equipped with 16 preconnectorized KeyQuick Pigtail LC PC



SP50 High-Rise FTTx Multidwelling Unit (MDU) Terminal

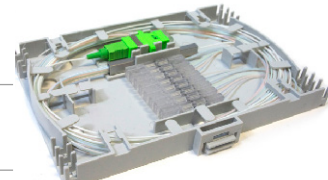
Ordering Information:

ICS1 Splice Cassette for SP50 and SP60

P/N Description

ICS1 equipped with KeyQuick® Splitters

ICS1 41S04	ICS1 equipped with KeyQuick preconnectorized Splitter 1 SC APC x 4 MS201
ICS1 41S08	ICS1 equipped with KeyQuick preconnectorized Splitter 1 SC APC x 8 MS201
ICS1 41S16	ICS1 equipped with KeyQuick preconnectorized Splitter 1 SC APC x 16 MS201



ICS1 equipped with 1 PLC Splitter SC APC

ICS1 51S04A	ICS1 equipped with 1 PLC Splitter 1x4 SC APC
ICS1 51S08A	ICS1 equipped with 1 PLC Splitter 1x8 SC APC
ICS1 51S16A	ICS1 equipped with 1 PLC Splitter 1x16 SC APC
ICS1 51S32A	ICS1 equipped with 1 PLC Splitter 1x32 SC APC

ICS1 equipped with 2 PLC Splitter SC APC

ICS1 52S04A	ICS1 equipped with 2 PLC Splitter 1x4 SC APC
ICS1 52S08A	ICS1 equipped with 2 PLC Splitter 1x8 SC APC
ICS1 52S16A	ICS1 equipped with 2 PLC Splitter 1x16 SC APC

ICS1 equipped with 1 PLC Splitter SC PC

ICS1 51S04B	ICS1 equipped with 1 PLC Splitter 1x4 SC PC
ICS1 51S08B	ICS1 equipped with 1 PLC Splitter 1x8 SC PC
ICS1 51S16B	ICS1 equipped with 1 PLC Splitter 1x16 SC PC
ICS1 51S32B	ICS1 equipped with 1 PLC Splitter 1x32 SC PC

ICS1 equipped with 2 PLC Splitter SC PC

ICS1 52S04B	ICS1 equipped with 2 PLC Splitter 1x4 SC PC
ICS1 52S08B	ICS1 equipped with 2 PLC Splitter 1x8 SC PC
ICS1 52S16B	ICS1 equipped with 2 PLC Splitter 1x16 SC PC

ICS1 equipped with 1 PLC Splitter LC APC

ICS1 51S04C	ICS1 equipped with 1 PLC Splitter 1x4 LC APC
ICS1 51S08C	ICS1 equipped with 1 PLC Splitter 1x8 LC APC
ICS1 51S16C	ICS1 equipped with 1 PLC Splitter 1x16 LC APC
ICS1 51S32C	ICS1 equipped with 1 PLC Splitter 1x32 LC APC

SP50 High-Rise FTTx Multidwelling Unit (MDU) Terminal

Ordering Information:

ICS1 Splice Cassette for SP50 and SP60

P/N Description

ICS1 equipped with 2 PLC Splitter LC APC

ICS1 52S04C	ICS1 equipped with 2 PLC Splitter 1x4 LC APC
ICS1 52S08C	ICS1 equipped with 2 PLC Splitter 1x8 LC APC
ICS1 52S16C	ICS1 equipped with 2 PLC Splitter 1x16 LC APC

ICS1 equipped with 1 PLC Splitter LC PC

ICS1 51S04D	ICS1 equipped with 1 PLC Splitter 1x4 LC PC
ICS1 51S08D	ICS1 equipped with 1 PLC Splitter 1x8 LC PC
ICS1 51S16D	ICS1 equipped with 1 PLC Splitter 1x16 LC PC
ICS1 51S32D	ICS1 equipped with 1 PLC Splitter 1x32 LC PC

ICS1 equipped with 2 PLC Splitter LC PC

ICS1 52S04D	ICS1 equipped with 2 PLC Splitter 1x4 LC PC
ICS1 52S08D	ICS1 equipped with 2 PLC Splitter 1x8 LC PC
ICS1 52S16D	ICS1 equipped with 2 PLC Splitter 1x16 LC PC

ICS1 equipped with 1 PLC Splitter FC PC

ICS1 51S04F	ICS1 equipped with 1 PLC Splitter 1x4 FC PC
ICS1 51S08F	ICS1 equipped with 1 PLC Splitter 1x8 FC PC
ICS1 51S16F	ICS1 equipped with 1 PLC Splitter 1x16 FC PC
ICS1 51S32F	ICS1 equipped with 1 PLC Splitter 1x32 FC PC

ICS1 equipped with 2 PLC Splitter FC PC

ICS1 52S04F	ICS1 equipped with 2 PLC Splitter 1x4 FC PC
ICS1 52S08F	ICS1 equipped with 2 PLC Splitter 1x8 FC PC
ICS1 52S16F	ICS1 equipped with 2 PLC Splitter 1x16 FC PC



SP50 High-Rise FTTx Multidwelling Unit (MDU) Terminal

Intelligent Cassette System (ICS)

Box	ICS1	ICS2	ICS3
SP50	x		
SP60	x		
MRB32		x	
MRB56		x	
KF40			x

* SP50 provided with 2 pieces ICS1 and fibre management accessories as basic configuration

* Maximum capacity ICS1: 6 pieces

* Maximum capacity of adapter module: 3 pieces (54 adapters)

* Refer to additional datasheets for related connectivity parts

Shipping Information:

SP50

	Individual Packaging	6 Pack Units
Dimensions	40.5 x 35.5 x 17 cm	71 x 44 x 48 cm
Weight	2.40 Kg	16.70 Kg