



MOUNT FROM THE CEILING, FLOOR OR BOTH

BT7850

Ø50MM POLE

Designed for ceiling, floor or floor-to-ceiling installations, the BT7850 is designed to combine with many B-Tech ranges to provide a solution where wall mounting is not preferable or possible. The poles are available in 0.25m, 0.5m, 1m, 1.5m, 2m and 3m lengths which can also be cut to length if required and feature safety bolt holes top and bottom for a secure installation. The BT7850 is internally unobstructed for cables to pass through easily, and poles can be linked together using BT7823 and BT7824 pole joiners. Also supplied with finishing ring for a neat install.

SPECIFICATION

Steel thickness	1.6mm
Max Load	140kg
Pole Diameter	Ø50mm
Lengths available	0.25m, 0.5m, 1m, 1.5m, 2m, 3m*
Colour	Black, Chrome or White**

*Please note poles can be cut to an exact length if required

**3m length poles only available in Black. White only available in 0.5m, 1m and 1.5m lengths.

FEATURES

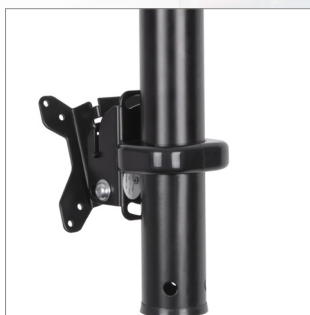
- 1.6mm thick steel pole can support large loads
- Poles can be cut to length if required
- Poles are internally unobstructed for cables to pass through easily
- Features safety bolt holes at top and bottom for secure installation
- Poles can be linked together using BT7823 or BT7824 Pole Joiners



Can be mounted from floors, ceilings or both for more mounting flexibility



Poles can be linked together using BT7823 & BT7824 Pole Joiners

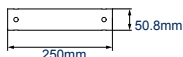


Compatible with all Ø50mm accessory collars such as the BT7052

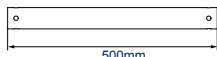


Features safety bolt holes at the top and bottom for secure installation

BT7850-025



BT7850-050



BT7850-100



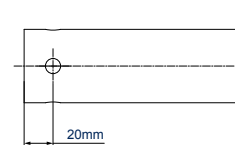
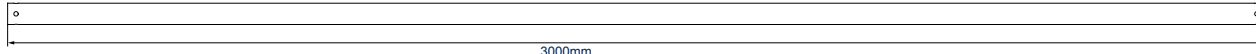
BT7850-150



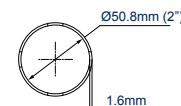
BT7850-200



BT7850-300



SECURITY HOLES



FRONT VIEW

COLOUR:	ORDER REF:	EAN CODE:	MASTER CARTON QTY:	INNER CARTON QTY:	MASTER CARTON WEIGHT:	MASTER CARTON CUBE:
Black	BT7850-025/B	5019318078866	32	8	17.33kg	0.047cbm
Chrome	BT7850-025/C	5019318078842	32	8	17.33kg	0.047cbm
Silver	BT7850-025/S	5019318078859	32	8	17.33kg	0.047cbm
Black	BT7850-050/B	5019318078446	16	4	17.58kg	0.046cbm
Chrome	BT7850-050/C	5019318078477	16	4	17.58kg	0.046cbm
Silver	BT7850-050/S	5019318078439	16	4	17.58kg	0.046cbm
White	BT7850-050/W	5019318078460	16	4	17.58kg	0.046cbm
Black	BT7850-100/B	5019318078507	8	2	16.08kg	0.038cbm
Chrome	BT7850-100/C	5019318078538	8	2	16.08kg	0.038cbm
Silver	BT7850-100/S	5019318078491	8	2	16.08kg	0.038cbm
White	BT7850-100/W	5019318078521	8	2	16.08kg	0.038cbm
Black	BT7850-150/B	5019318078989	4	4	13.08kg	0.026cbm
Chrome	BT7850-150/C	5019318078958	4	4	13.08kg	0.026cbm
Silver	BT7850-150/S	5019318078965	4	4	13.08kg	0.026cbm
White	BT7850-150/W	5019318071331	4	4	13.08kg	0.026cbm
Black	BT7850-200/B	5019318078576	4	2	17.5kg	0.044cbm
Chrome	BT7850-200/C	5019318078590	4	2	17.5kg	0.044cbm
Silver	BT7850-200/S	5019318078552	4	2	17.5kg	0.044cbm
Black	BT7850-300/B	5019318079207	1	0	-	-
Chrome	BT7850-300/C	5019318079429	1	0	-	-

ACCESSORIES AND RELATED PRODUCTS



BT7853
Heavy Duty Ø50mm Pole
for mounting to the wall, ceiling or floor



BT7822
Heavy Duty Ceiling/ Floor Mount
for Ø50mm poles



BT7841
2-Piece Accessory Collar
for use with Ø50mm poles



BT7823 & BT7824
Internal & External Pole Joiners for use
with BT7850 and BT7853 Ø50mm poles

© 2022 B-Tech Professional. Pole Mounting Hardware. All rights reserved.
The information in this specification sheet reflects the current technical specifications of B-Tech Professional Design & Manufacturing Limited.
We warrant the goods to conform to the technical specifications and physical specifications without limitation. This is limited to the goods as they are shown in the technical drawing.
B-Tech Professional is not liable for loss or damage caused by improper installation or mounting or for any other reason. Reproduction or transmission of any part of this
specification is expressly prohibited without prior written permission. This document is the property of B-Tech Professional Design & Manufacturing Limited. E&OE.

SS-V1-BT7850-140422