

# BT7807

## HEAVY DUTY TWIN POLE CEILING / FLOOR MOUNT FOR Ø50MM POLES

Made from heavy duty steel, the BT7807 is a robust, twin pole mounting solution designed to mount Ø50mm poles to the floor or ceiling. Capable of supporting heavy loads, it is the ideal solution for heavy duty flat screen installations or complex configurations that feature multiple screens or AV components. Finished installations look neat and tidy thanks to plastic cover plates which are included as standard.



### SPECIFICATIONS

Max load	200kg*
Elevation / Drop	141mm
Plate dimensions	426mm x 150mm
Colour	Black or White

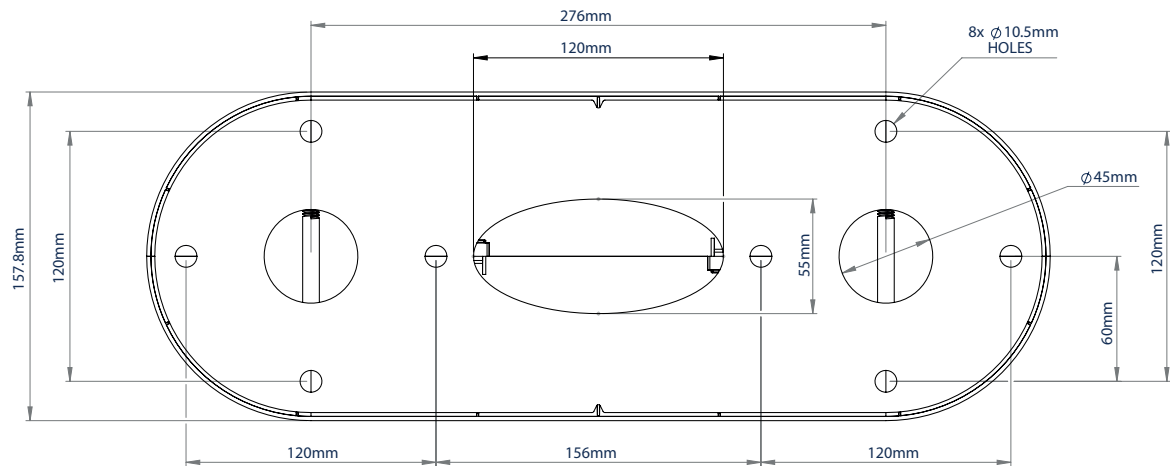
### FEATURES

- 1 Ideal for ceiling mounting heavy duty screens which require extra-large mounts
  - 2 Can be used to mount poles to the floor or ceiling
  - 3 Integrated cable management to hide unsightly cables
  - 4 Ideal for creating multi-screen pole mounted installations - such as video walls
- Can be used to mount two Ø50mm poles to the ceiling or to the floor
  - Heavy duty steel capable of supporting substantial loads
  - Multiple grub screws allow micro-adjustment of the pole to ensure a perfectly angled drop, even with heavy loads attached
  - Speeds up twin pole installations by eliminating the need to measure the distance between pole centres
  - Includes cover plate for a neat and tidy installation

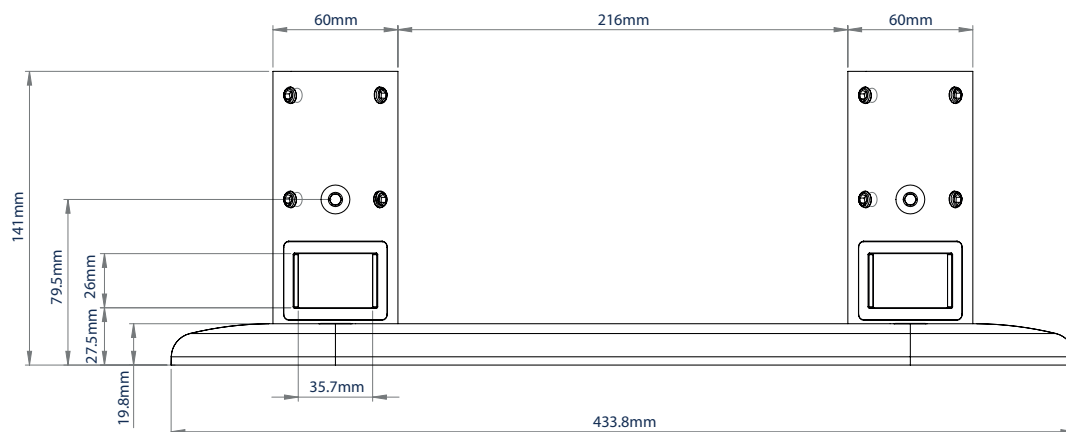


\*Max load can be increased when being used as part of a floor to ceiling installation

# BT7807



TOP VIEW WITH COVER PLATE



SIDE VIEW WITH COVER PLATE

## ORDERING INFORMATION

COLOUR	ORDER REF	EAN
Black	BT7807/B	5019318759659
White	BT7807/W	5019318071362

## RELATED PRODUCTS

PRODUCT CODE	NAME	DESCRIPTION
BT7850	Ø50mm Poles	Designed for ceiling, floor or floor-to-ceiling installations, available up to 3m
BT7841	50mm Accessory Collar	For fixing mounts & accessories to Ø50mm poles
BT7822	Heavy Duty Ceiling Mount / Floor Mount	To mount any Ø50mm pole to the ceiling or floor
BT7056	Floor Fixing Kit	For use in floor-to-wall or ceiling-to-floor installs