

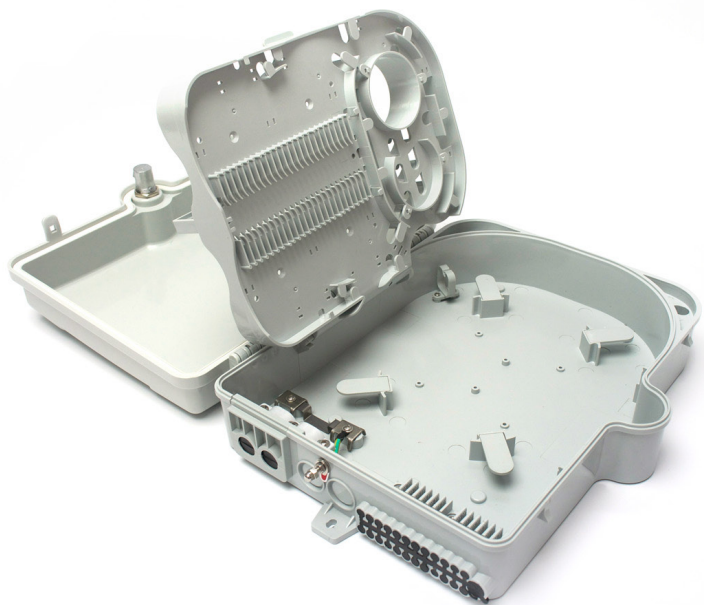
## BMU200 Optical Distribution Box Indoor/Outdoor



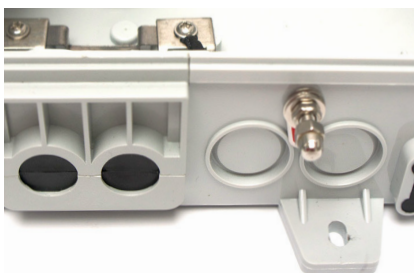
IP 54

### Applications

The BMU 200 is perfect to be used in FTTH networks, as its shape and compact design allows to take the maximum profit from its interior and to save space where it is located, in both a wall or an outdoor pole, or an indoor; in cabinets, walls, in the base of the building or in a teleco room. It fits perfectly in constructions with a few dwellings, base stations, campus, commercial centers, business parks and other applications in which users require a big bandwidth for wireless coverage, private networks or data or video bandwidth services.



Capacity up to 48 fusions or 24 mechanical splices  
in one unique box.



2 entries for multifibre cable (allows to make a loop) and 2 reserved entries.



Easy installation of the Pre-connected cables



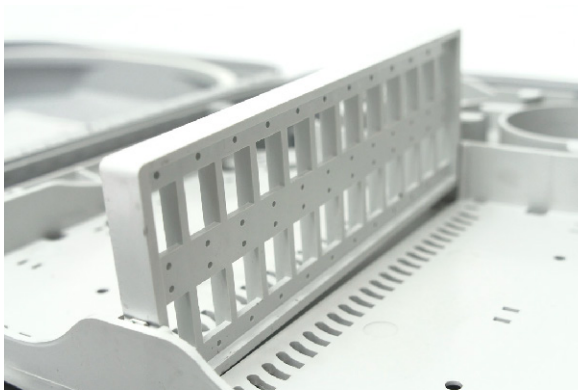
An effective gripping for drop cables.



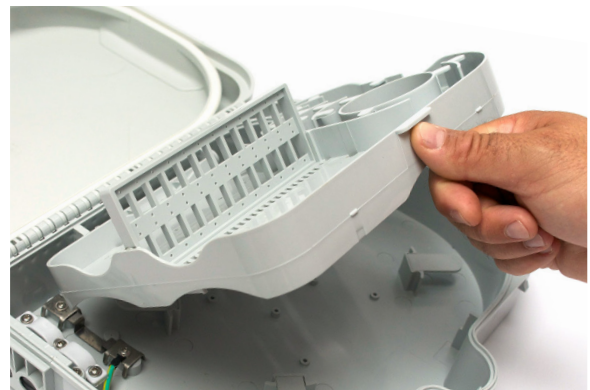
## BMU200 Optical Distribution Box Indoor/Outdoor

### Features

- Folding sole box with supports for splices, splitters, adapter modules, splitter module and cassette for cable organization.
- Wall or pole mounting.
- Lockable door in one side.
- Impermeable box IP54.
- Door sealing with rubber and protected ports.
- Accessories for cable holding.
- UV resistant.
- Isolated box with grounding.
- Capacity up to 24 adapters SC type (SC, LC, E2000)
- Capacity up to 48 fusions or 24 mechanical splices in one unique box.
- 3 cable ports: 24 entries for drop cable, 2 entries for multifibre cable (allows to make a loop) and 2 reserved entries.
- Supplied with adapters, and boxes equipped with: KeyQuick® Mechanical Splice, KeyQuick® Pigtails, KeyQuick® Splitter or PLC Splitter.



Capacity up to 24 adapters SC type



Unique folding tray



Lockable door

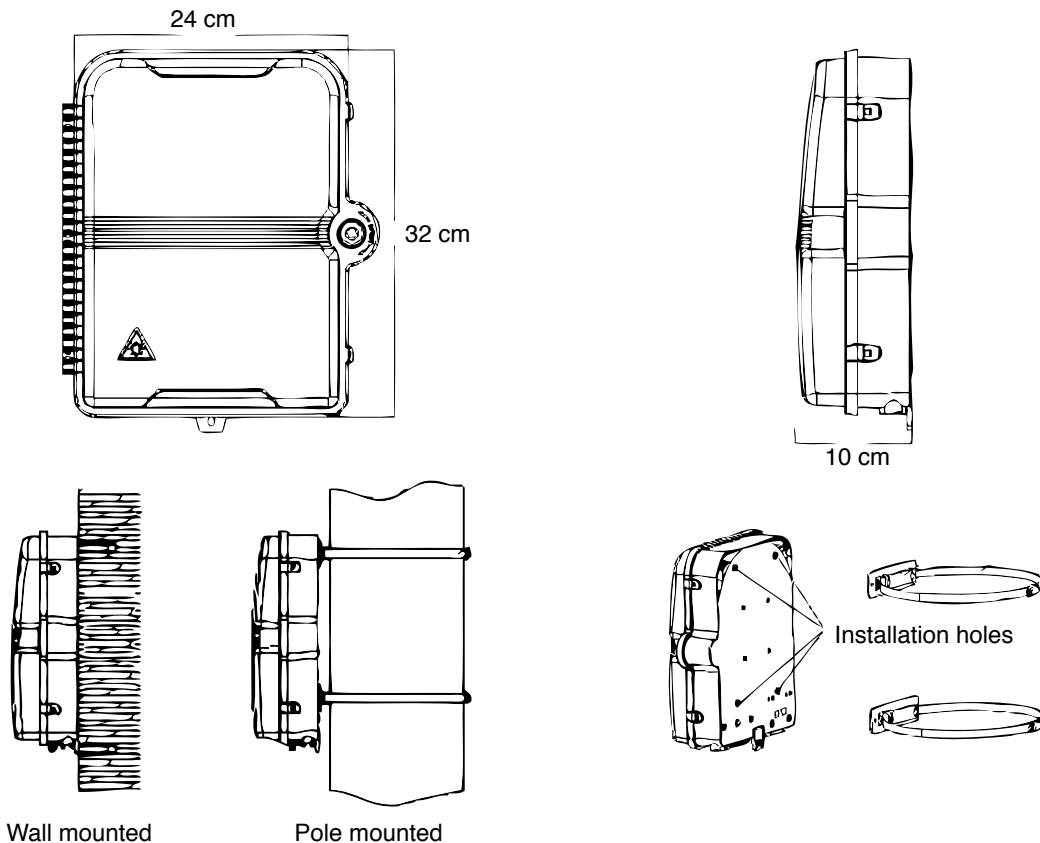


Removable tray

## BMU200 Optical Distribution Box Indoor/Outdoor

### Specifications

Attribute	Value
Dimensions (High x long x wide)	32 x 24 x 10 cm
Adapter capacity	24 (SC shape)
Splice capacity	48 fusions or 24 Mechanical Splice
Multifibre cable por (allows loop)	2 x 15 mm (12 mm Rubber glands)
Drop cable ports	24 x 5 mm (Rubber glands)
Reserved port	2 x 18 mm
Material	PC/ABS
Color	Grey
Mounting type	Wall / Pole
Impermeability protection	IP54
Temperature resistance	-40 °C up to 60 °C
Inflammability index	UL 94V-0
UV Resistance	1000 MΩ
Closing	Key lock
Ground isolation	EPDM
Sealing ring material	Yes





## BMU200 Optical Distribution Box Indoor/Outdoor

### BMU200 Equipment

BMU200 can be pre-equipped, including different pre-installed components in the box, so it is ready to be connected to accelerate this process. It is a modular and simple system configured following the concept of few components joined without expensive and specialized tools and that does not require more than basic knowledge to install.

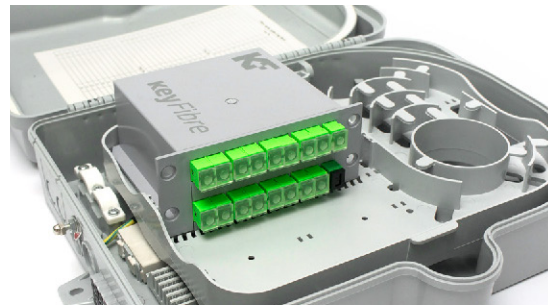
There are a few possible configurations to create a fibre infrastructure at the maximum level, with preconnectorized KeyQuick® Pigtailed, KeyQuick® Splitters and KeyQuick® Mechanical Splices. It is also available with PLC Splitters.

A concept that allows to optimize the installation time, minimizing the human mistake probabilities and assuring that installed fibres give a perfect performance, getting a lower attenuation because of the use of less connectors or splices, and reducing considerably the installation time due to the already partially made connections.

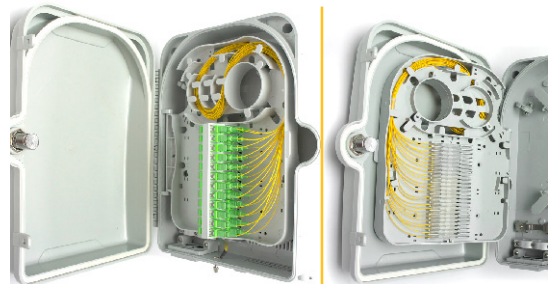
The box preconnectorized with KeyQuick® Splitters is always provided with an SC APC adapter. Connecting a Visual Fault Locator is the easiest and fastest way to check the connection between one point and another, to be able to see any failure in the connection to the KeyQuick® Splitter by using a red light, that allows the installer to remake the connection quickly in the field.

### Combinations

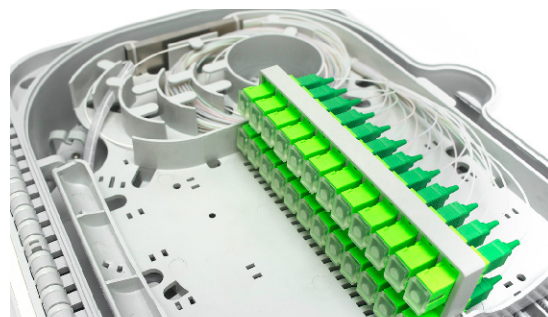
Equipment	Quantity
KeyQuick® Pigtail	24 x (SC or LC, PC or APC)
KeyQuick® Splitter SC APC	1x4, 1x8, 1x12, 1x16, 1x24
PLC Splitter SC APC	1x4, 1x8, 1x12, 1x16, 1x24
KeyFibre® Splitter Module	1x2, 1x4, 1x8, 1x16



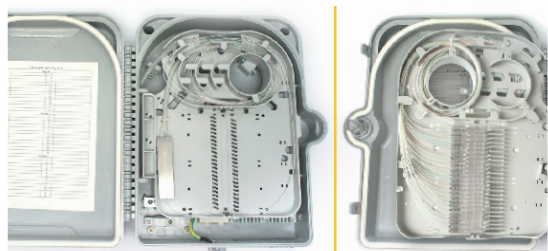
BMU200 equipped with Splitter Module 1x16.



Equipped tray with 24 KeyQuick® Mechanical Pigtailed.



BMU200 equipped with PLC Splitter 1x24



Equipped tray with KeyQuick® Splitter 1x24.

## BMU200 Optical Distribution Box Indoor/Outdoor

### Splitter Module for BMU200.

The Modular Optical Splitter, or Splitter Module, is a passive component used in PON Networks (Passive Optical Networks) that divides the optical signal coming from one fiber to a few others.

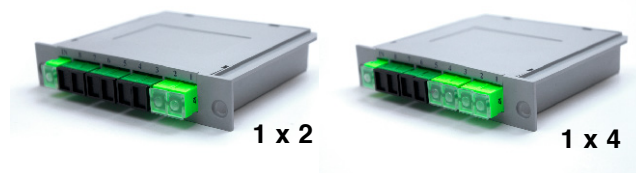
The use of splitters in an optical network provides the point-to-multipoint architecture, that is one fibre coming from the operator that is subdivided for uncountable subscribers in different locations.



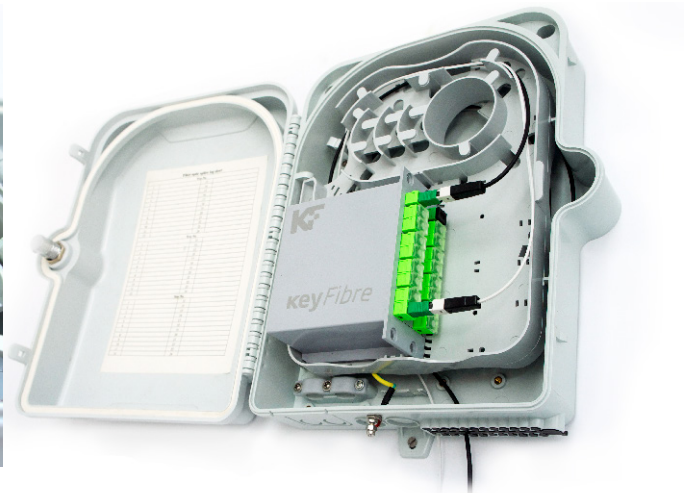
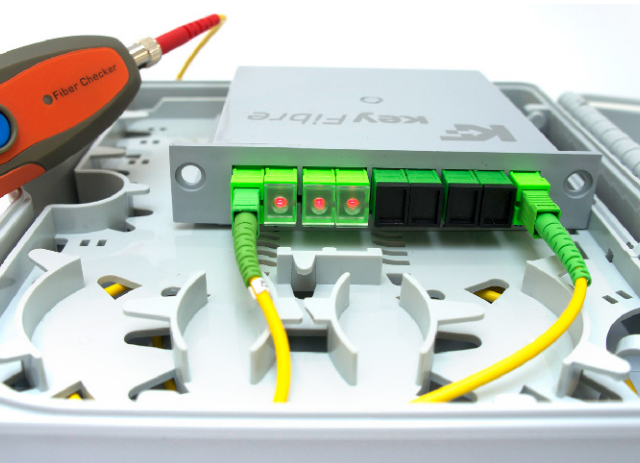
1



They are composed by one incoming fibre and N outgoing fibres, which divide the optical signal power proportionally between them. It is suitable to operate in the three communication windows of the passive optical network standards: 1310 nm, 1490 nm and 1550 nm. The insertion loss and the uniformity remain stable between 1260 and 1650 nm.

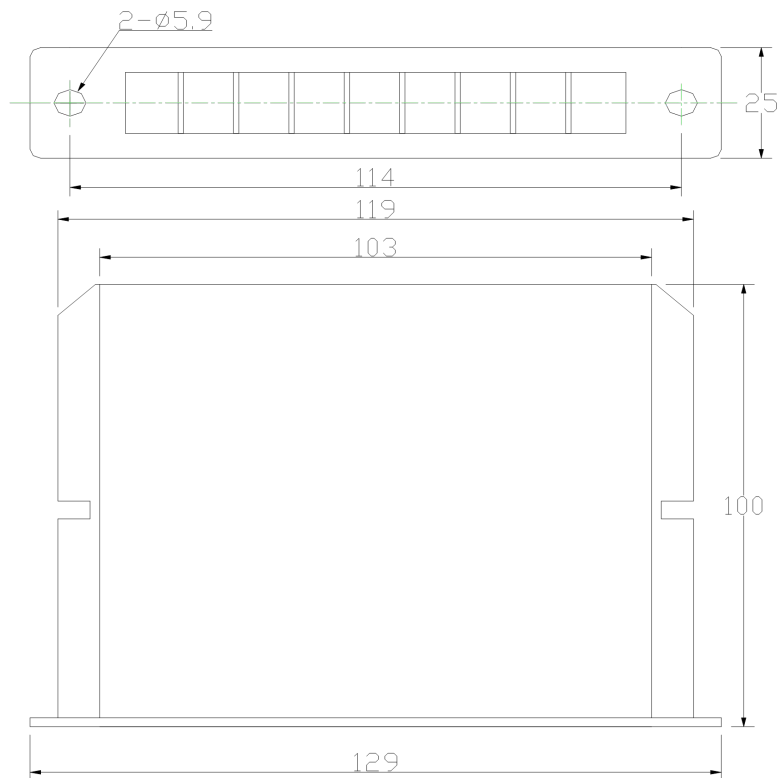


Values are certified in Laboratory. The LGX modular optical splitters are specifically developed for plug-and-play application and provided with SC APC adapters with transparent dust cap, increasing installation's speed and organization.



## BMU200 Optical Distribution Box Indoor/Outdoor

<b>Installation environment</b>	Indoor or Outdoor (Location in adequate box)	
<b>Compatibility</b>	<b>BMU100</b>	Multi-function Distribution Box. Indoor and Outdoor. 40 fibres, IP54. Up to 12 SC adapters.
	<b>BMU200</b>	Multi-function Distribution Box. Indoor and Outdoor. 48 fibres, IP54. Up to 24 SC adapters.
<b>Warranty</b>	12 meses	
<b>Advantages</b>	<ul style="list-style-type: none"> <li>• Provided with SC APC adapters with transparent dust cap.</li> <li>• Low insertion loss and excellent uniformity.</li> <li>• High reliability.</li> </ul>	



## BMU200 Optical Distribution Box Indoor/Outdoor

### Specifications

Attribute	Units	Values			
		1x2	1x4	1x8	1x16
In / Out		1x2	1x4	1x8	1x16
Operative wavelength	nm	1260 ~ 1650			
Insertion Loss:	Typical	3,6	7,0	10,3	13,6
	Máx.	4,3	7,4	10,7	13,9
Uniformity (Max.)	dB	0,5	0,8	0,8	1,4
PDL (Max.)	dB	0,2	0,3	0,3	0,3
TDL (Max.)	dB	0,5			
Return Loss	dB	≥55 (APC)			
Directivity	dB	≥55			
Operative Temperature	°C	-40 ~ +85			
Dimension	mm	100 x 129 x 25		100 x 129 x 50	

\* The specifications above do not include connector. For APC connectors, add 0.3 dB of insertion loss.

<b>Connector type</b>	SC APC
<b>Attenuation (dB)</b>	
<b>Typical</b>	0,15
<b>Máx</b>	0,30
<b>Return Loss (dB)</b>	> 60
<b>Features</b>	<ul style="list-style-type: none"> <li>• Push-Pull Connector</li> <li>• Plastic body</li> <li>• Ceramic ferrule (zirconia)</li> <li>• SM Fibre</li> </ul>

<b>Type of fibre</b>	"Bend resistant" G657A incoming and outgoing fibre
<b>Applicable rules</b>	<ul style="list-style-type: none"> <li>• Telcordia GR-1209 (Optical Passive Components)</li> <li>• Telcordia GR-1221 (Optical Passive Components Reliability Requirements)</li> <li>• IEC 61753-1 (Fibre Optic Interconnection Devices and Passive Components – Performance Standard)</li> </ul>



## BMU200 Optical Distribution Box Indoor/Outdoor

### Ordering Information:

#### BMU200

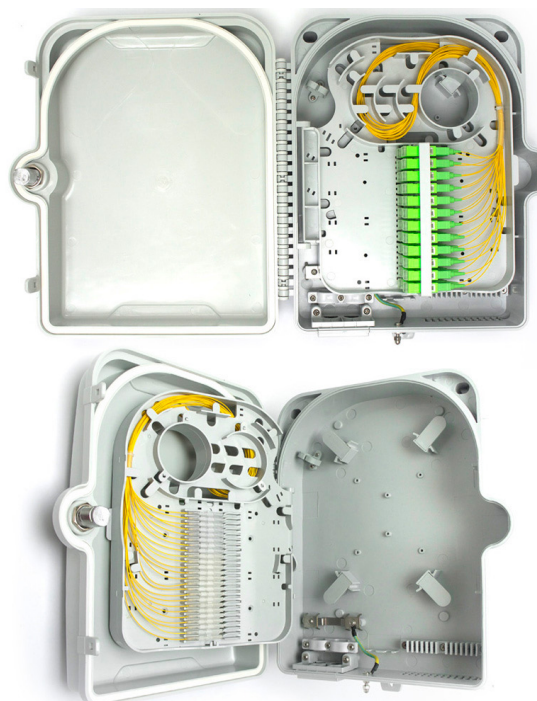
PN	Description
<b>BMU200</b>	<p>Optical Distribution Box Multi Function Indoor/Outdoor, 48 fibres, IP54. Up to 24 adapters in SC shape.</p> <p>Valid to allocate PLC splitters 1x8 or 1x16</p> <p><b>Accessories included</b></p> <ul style="list-style-type: none"> <li>• 1 key for the door lock</li> <li>• 24 protection sleeves for fusion</li> <li>• 8 bridles</li> <li>• 24 cable drop fixations</li> <li>• 3 screws</li> <li>• 3 wads</li> </ul> <p>* The Pole mounted kit sold separately</p>



1

### BMU200 equipped with KeyQuick® Pigtail

<b>BMU23012A</b>	Equipped with 12 preconnectorized KeyQuick® Pigtail SC APC
<b>BMU23024A</b>	Equipped with 24 preconnectorized KeyQuick® Pigtail SC APC
<b>BMU23012B</b>	Equipped with 12 preconnectorized KeyQuick® Pigtail SC PC
<b>BMU23024B</b>	Equipped with 24 preconnectorized KeyQuick® Pigtail SC PC
<b>BMU23012C</b>	Equipped with 12 preconnectorized KeyQuick® Pigtail LC APC
<b>BMU23024C</b>	Equipped with 24 preconnectorized KeyQuick® Pigtail LC APC
<b>BMU23012D</b>	Equipped with 12 preconnectorized KeyQuick® Pigtail LC PC
<b>BMU23024D</b>	Equipped with 24 preconnectorized KeyQuick® Pigtail LC PC





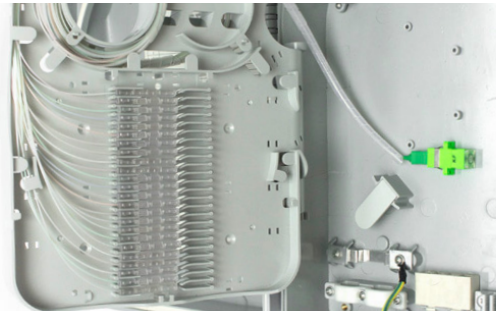
## BMU200 Optical Distribution Box Indoor/Outdoor

### Ordering Information:

PN Description

#### BMU200 equipped with KeyQuick® Splitter

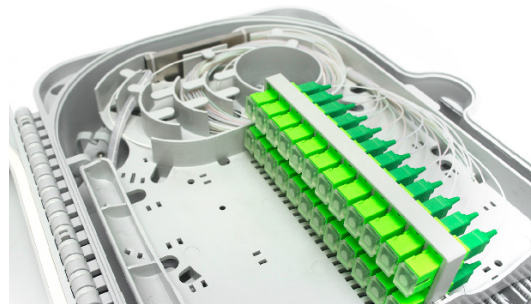
<b>BMU241S04</b>	1 KeyQuick® Splitter 1 SC APC x 4 MS201
<b>BMU241S08</b>	1 KeyQuick® Splitter 1 SC APC x 8 MS201
<b>BMU241S12</b>	1 KeyQuick® Splitter 1 SC APC x 12 MS201
<b>BMU241S16</b>	1 KeyQuick® Splitter 1 SC APC x 16 MS201
<b>BMU241S24</b>	1 KeyQuick® Splitter 1 SC APC x 24 MS201



1

#### BMU200 equipped with PLC Splitter SC APC

<b>BMU251S04A</b>	1 PLC Splitter 1x4 SC APC
<b>BMU251S08A</b>	1 PLC Splitter 1x8 SC APC
<b>BMU251S12A</b>	1 PLC Splitter 1x12 SC APC
<b>BMU251S16A</b>	1 PLC Splitter 1x16 SC APC
<b>BMU251S24A</b>	1 PLC Splitter 1x24 SC APC



#### KeyFibre® Splitter Module SC APC for BMU200

<b>KSM102A</b>	KeyFibre® Splitter Module 1x2 SC APC Transparent Dust Cap
<b>KSM104A</b>	KeyFibre® Splitter Module 1x4 SC APC Transparent Dust Cap
<b>KSM108A</b>	KeyFibre® Splitter Module 1x8 SC APC Transparent Dust Cap
<b>KSM116A</b>	KeyFibre® Splitter Module 1x16 SC APC Transparent Dust Cap



\* Other configurations available under request.

\* The BMU200 and the KeyFibre® Splitter Module are sold separately.

### Shipping Information:

BMU200	Individual Packaging	10 Pack Units
<b>Dimensions</b>	34 x 30 x 12,5 cm	61 x 36,5 x 62,5 cm
<b>Weight</b>	1,7 kg	18,3 kg