



DOUBLE COVERED ARCHITECTURAL BRACKETS FOR SLIMLINE MAGNETS (600LB)

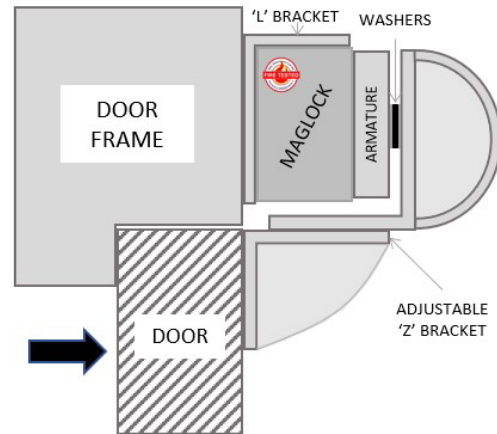
MAGNETIC LOCK

Fire tested range of maglocks and brackets from a market leader in access control.

FIRE TESTED to
BS EN1634-1:2014 & BS476:Part22:1987
(30, 60, 90 & 120 min timber door-sets)



AB600ZL-DC



SPECIFICATION

AB600ZL-DC

- Architectural Z&L brackets
- Anodised aluminium finish
- (Use BK600-D-FL/AB for double maglocks)
- Adjustable to suit different applications
- For use with the ML600 range of products
- Cover screws and bolts (no visible fixings)
- Covers entire length of maglock
- For inward opening doors
- Aesthetically improves the maglock

FEATURES

AB600ZL-DC

- Provide a more aesthetically pleasing finish to any maglock installation.
- Can suit a wide range of locations from modern offices to public buildings

Other Brackets in the 600 Range:

- BK600ZL (ZL bracket)
- BK600-F-L/AB (Architectural F/ZL)
- BK600-D-FL/AB (Architectural Double)
- GD600ZL (Glass Door ZL)

INWARD

OUTWARD

- BK600L (L Bracket)
- AB600CL (Architectural L)
- ADJ600-L (Highly adjustable L)
- AH600 (Required for Fire Doors)
- BK600U (Glass door bracket)

OTHER PRODUCTS

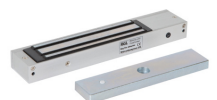
EBCBWC02/DR



EXTR02



ML600



DU-CB/PTE



DIMENSIONS

AB600ZL-DC

- Z1: 254x50x75 (mm)
- Z2: 254x50x31 (mm)
- L: 250x50x29 (mm)
- 1kg (Boxed)
- 886g (Unboxed)

CONTENTS

AB600ZL-DC

- 2 x Brackets to make up Z
- 1 x L Adjustable bracket
- 1 x Fixing kit



Manufactured by a BSIA Member