

## Cascade Msw 9 IN A/P TV

# SWI908TS SWI912TS

# SWI916TS SWI924TS

# SWI932TS



The **SWI9xxTS Serie** belongs to the **cascade** multiswitch range with **9 inputs** (8 satellite polarities and TV); it was designed to fulfil every installation requirement in small and medium distribution systems.

The product ensures high quality in a **compact size**, its inputs are distinguished by different **colours** to make the cable connection faster and easier.


The serie is composed by 5 products: **9 inputs with 8, 12, 16, 24 and 32 output taps**; each port has a **LED** which shows the correct reception of the STB DiSEqC command.

The product can be used with **SWA930TS** amplifier, which allows to adjust appropriately the satellite and TV gains.

### Characteristics

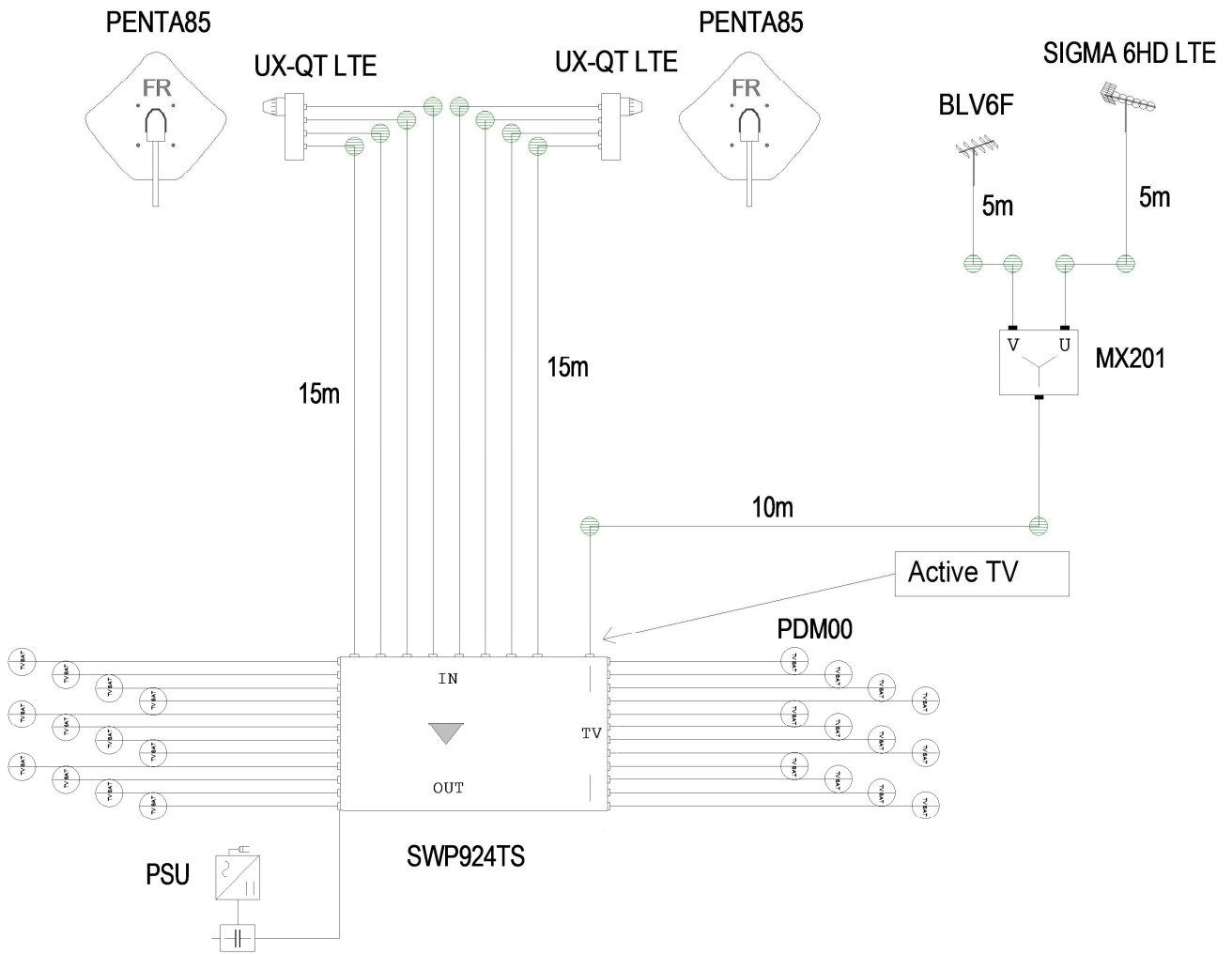
- **Dip switch** to select TV gain active and passive
- **Return channel** included when TV gain is passive
- Satellite bandwidth up to **2300MHz**
- **High output level**
- Easy to install thanks to **standard colour coding**
- **Low cost**
- **Compact size**

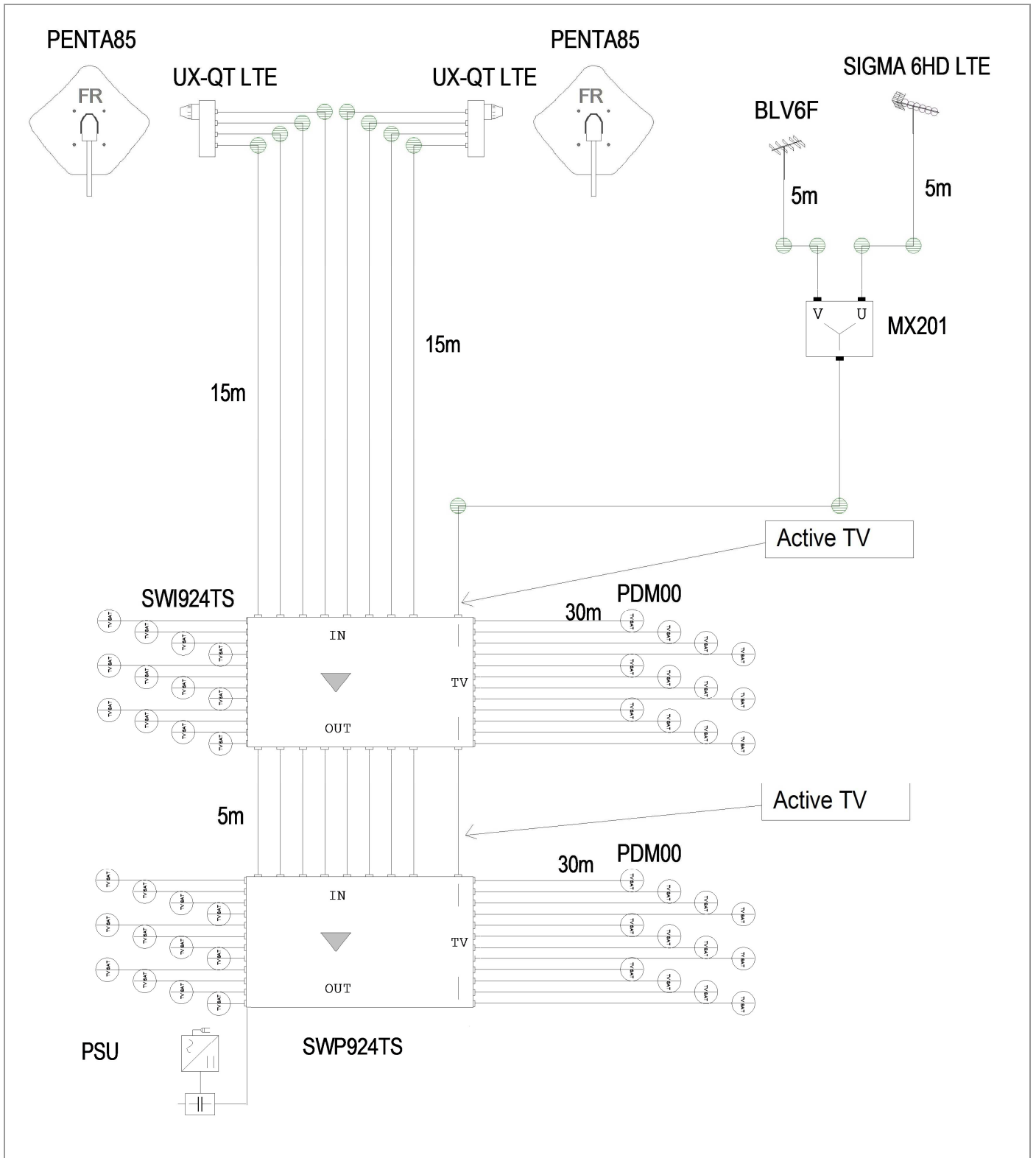
		SWI908TS	SWI912TS	SWI916TS	SWI924TS	SWI932TS
Fracarro Code		287360	287361	287362	287363	287364
Inputs		9				
Outputs		8	12	16	24	32
<b>Satellite</b>						
Bandwidth	MHz	950 - 2300				
Gain	dB	2	1	1	-1	-2
Uptilt	dB	4				
Insertion Loss	dB	-2	-3	-3	-4	-4
Max Output Level (IM3)	dBμV	100				
Return Loss	dB	10				
<b>Terrestrial</b>						
Bandwidth	MHz	50 - 862				
Gain Active	dB	-2	-3	-4	-5	-6
Gain Passive	dB	-22	-23	-24	-25	-26
Insertion Loss	dB	-4	-4.5	-4.5	-5	-6
Max Output Level (IM3)	dBμV	95				
Return Loss	dB	10				
<b>General Parameters</b>						
Isolation SAT/SAT TV/SAT	dB	30				
Standard	V, KHz	14/18 0/22 - DiSEqC 2.0				
Tap Consumption	mA	50				
Trunk Consumption(@13V)	mA	160 (TV Active)				
DC Plug	mm	2.1x5.5x12				
	pol	internal positive, external negative				
Max current to LNB	mA	1500				
Dimensions	mm	110x190x40	170x190x40	170x190x40	230x190x40	300x190x40
Operating Temperature	°C	-20 ÷ 60				

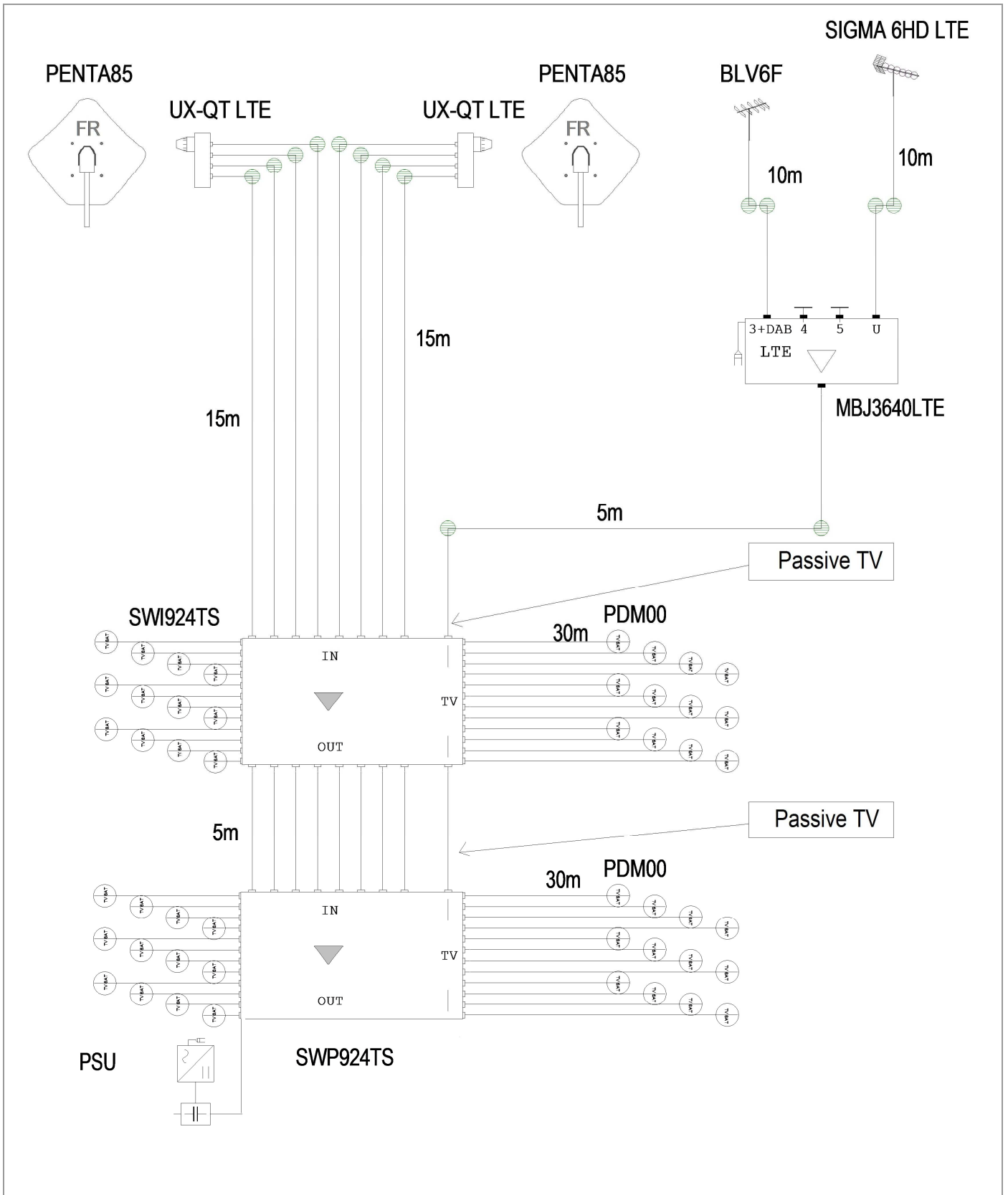
OPTIONAL / NOT INCLUDED		PSU1315TS
Fracarro Code		287375
Output Voltage	V	13
Output Current	mA	1500
Main Voltage	V, Hz	120-240, 50-60
Isolation	Classe	II
DC Plug	mm	2.1x5.5x12
	pol	 internal positive, external negative
Dimensions	mm	110 x 52 x 34
Operating Temperature	°C	0 ÷ 40

Code	Item	Packaging	Quantity	Dimensions	Net Weight	Weight
			pcs	mm	kg	kg
287360	SWI908TS	Single	1	155x255x45	0.6	0.6
287361	SWI912TS	Single	1	255x245x55	0.9	0.9
287362	SWI916TS	Single	1	255x245x55	0.9	0.9
287363	SWI924TS	Single	1	330x245x55	1.2	1.2
287364	SWI932TS	Single	1	330x245x55	1.2	1.2
287375	PSU1315TS	Single	1	100x50x70	0.16	0.16

# Installation Example

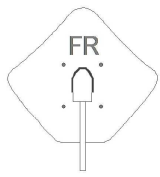






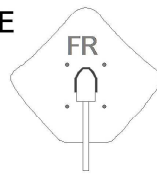
PENTA85

PENTA85



UX-QT LTE

UX-QT LTE



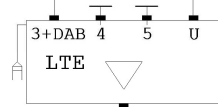
SIGMA 6HD LTE

BLV6F



10m

10m



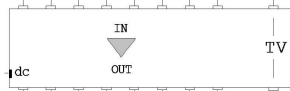
MBJ3640LTE

15m

15m

5m

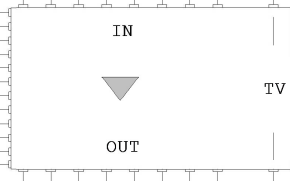
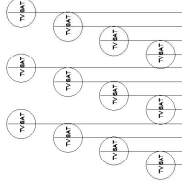
SWA930TS



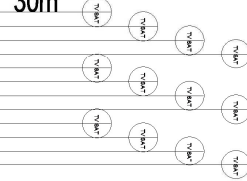
Passive TV

Passive TV

SWI924TS

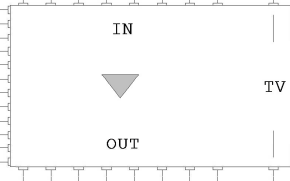
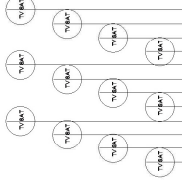


30m PDM00

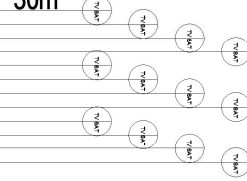


Passive TV

SWI924TS



30m PDM00

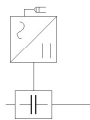


Passive TV

5m

30m PDM00

PSU



SWP924TS

