



Televes reserves the right to modify the product

F.O. Patch Box pre-terminated

2 to 4 SC/APC outputs

Device enabled as a connection point to an optical fiber network. In communications infrastructures, when installed in the Network Termination Equipment (NTE), it works as a cut-off and test point for the optical fiber network.

It includes the fiber pre-terminated on one end with 2-SC/APC connectors, this provides the installer with greater comfort and agility in assembly, since the installer only has to do the fusion or connection of 2 FO connectors at the connection point.

The design also allows installation in other types of premises (car repair shops, classrooms, work tables, wiring cabinets, etc.) and use as a connection point.

Ref.231540	2x15m-fibers	
	Art.Nr	OB4215B
	EAN13	8424450251379
Ref.231541	2x 25m-fibers	
	Art.Nr	OB4225B
	EAN13	8424450251386
Ref.231542	2x 40m-fibers	
	Art.Nr	OB4240B
	EAN13	8424450251393
Ref.231543	2x 55m-fibers	
	Art.Nr	OB4255B
	EAN13	8424450251409

Highlights

- Made of robust ABS plastic
- With a capacity of up to 4 SC/APC output connectors
- Multi-anchoring system: DIN rail, wall or outlet
- ITU-T G657A2 single-mode fibers
- Identifying label
- Equipped with 2 "SC/APC" female-to-"SC/APC" female adapters (with self-locking cover)

- 100% european quality: manufactured by Televes in Spain

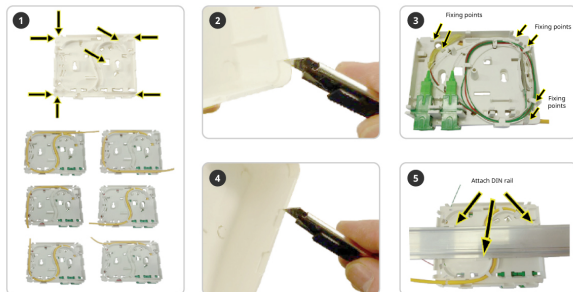
Main features

- Dca-s2,d2,a2 Euroclass
- White colour (RAL 9003)
- 6 inputs, pre-cut on its sides, for FO access
- Back input for SC connector
- Back input for FO and SC connector
- Pre-cut input at the bottom, for access to a distribution frame (SC/APC)
- Equipped with: 2 heat-shrink sleeves, 2 cable ties, installation screws

Additional information

(Click to see the picture)

Mounting details



1. Select the most suitable entry for the fibre optic hose, maintaining a smoothly curved fibre path.
2. Cut in the cover the appropriate tab to the used entry.
3. Fit the fibre to the PAU, fix it with cable ties at the anchor points and connect it to the adapters.
4. Fix the PAU either to the wall, using the screws supplied, or to DIN by removing the pre-cut tabs on the cover.

