

ADVANCED FULL-MOTION PREMIUM WALL MOUNT FOR TVS 32" - 55"

High-end performance meets high-end design

The Advanced Full-Motion Premium TV Mount is a next-generation mount that incorporates the TV into a home in an entirely modern way. Featuring a stylish brushed metal finish and slim profile, the Advanced Full-Motion Mount complements the sleek look of today's TVs. Beneath the mount's exterior is a precision-engineered, ultra-strong solid steel frame – ensuring the TV stays securely in place.

Expertly engineered with FluidMotion™ design, the Advanced Full-Motion Mounts provide unparalleled smoothness – allowing for effortless extension and swivel. The mount's Steady Set™ functionality holds the TV in place – eliminating drift and unwanted TV movement. The simple and intuitive design guarantees a quick and hassle-free installation.



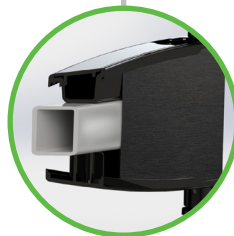
Stylish brushed metal exterior seamlessly blends with TV and décor



Steady Set™ holds TV in exact position – preventing drift and unwanted TV movement



Slim full-motion mount sits just 2.04" from the wall in home position accentuating the sleek look of ultra-thin TVs



Precision-engineered, ultra-strong, solid steel frame provides maximum support



Virtual Axis™ provides fingertip tilt



In-arm cable management creates a clean look



FluidMotion™ design provides effortless TV movement



SPECIFICATIONS

PRODUCT DIMENSIONS (W X D X H)

19.72" x 2.04" x 15.91"
50.09cm x 5.18cm x 40.41cm

TV SIZE / WEIGHT CAPACITY

55 lbs. / 24.95kg

MINIMUM DEPTH FROM WALL

2.04" / 5.18cm

EXTENSION

20" / 50.80cm

MOUNTING PATTERN (VESA)

100x100, 200x200, 300x300,
400x200, 400x400

PACKAGE DIMENSIONS (W X D X H)

19.88" x 14.17" x 2.60"
50.50cm x 36cm x 6.60cm

PACKAGE WEIGHT

11.5 lbs / 5.2kg

MASTER PACK QTY

2

MASTER PACK DIMENSIONS (W X D X H)

20.27" x 14.96" x 6.01"
51.49cm x 38.00cm x 15.27cm

MASTER PACK WEIGHT

24.6 lbs / 11.1 kg

FINISHES

Brushed Black Stainless, VMF720-B2
Brushed Silver Stainless, VMF720-S2

UPC

Black: 793795533609
Silver: 793795533630



ADDITIONAL FEATURES:

- Up to 15° of tilt and 60° of swivel left to right for ultimate viewing flexibility
- Easily level TV after installation
- Decorative covers conceal hardware for a clean look
- Safety-tested, UL-listed and features a 10-year limited warranty
- All hardware and drilling template included



BRUSHED SILVER STAINLESS

