

Parameters

Electric Parameters (from HDL-MPPI.48):	
BUS power supply	DC12-30V
BUS power consumption (from HDL-MPPI.48)	15mA/DC24V
Environmental Conditions:	
Working temperature	0°C~45°C
Working relative humidity	Up to 90%
Storage temperature	-20°C~+60°C
Storage relative humidity	Up to 93%
Approved	
CE	
RoHS	
Production Information:	
Dimensions	86×86×10.5 (mm)
Weight	MP2B.48: 105.5(g); MP4B.48:105(g) MP6B.48: 106.5(g); MP8B.48:
Housing material	Glass, ABS, PC
Installation	EU wall box
Protection degree	IP20

Important Notes

- It must work in conjunction with HDL-MPPI.48 device (be installed in wall box).
- User can design and replace the button labels.
- Alternative plates of different materials and colors are available.
- IR Control—Need to customize the plate with IR receiver hole.
- Bus cable—HDL Bus/KNX cable, 0.8mm single-core copper cable.
- Bus Connection—Series connection (hand-in-hand).
- Installation—EU wall box.

Installation Step

- Connect bus cables. Make sure the color of wire complies with the definition
- Make sure the Bus cable type is correct and has no short circuit
- Mount the HDL-MPPI.48 in the wall box
- Put this device into HDL-MPPI.48

Safety attention

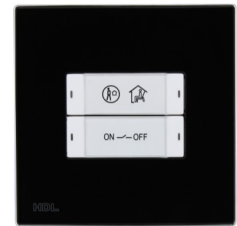


- The screw down strength should not exceed 0.1Nm
- Mounting position: indoor
- Do not make wrong connection on Bus interface, it will damage the Bus interface of this module
- Avoid the rain or water into module, it will damage this devices
- Do not get AC power into Bus wire , it will damage all devices in the system

Overview



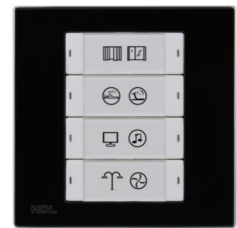
HDL-MP2B.48



HDL-MP4B.48



HDL-MP6B.48



HDL-MP8B.48

Multi-function panel, button labels, plate material and color are easy to replace.

Functions

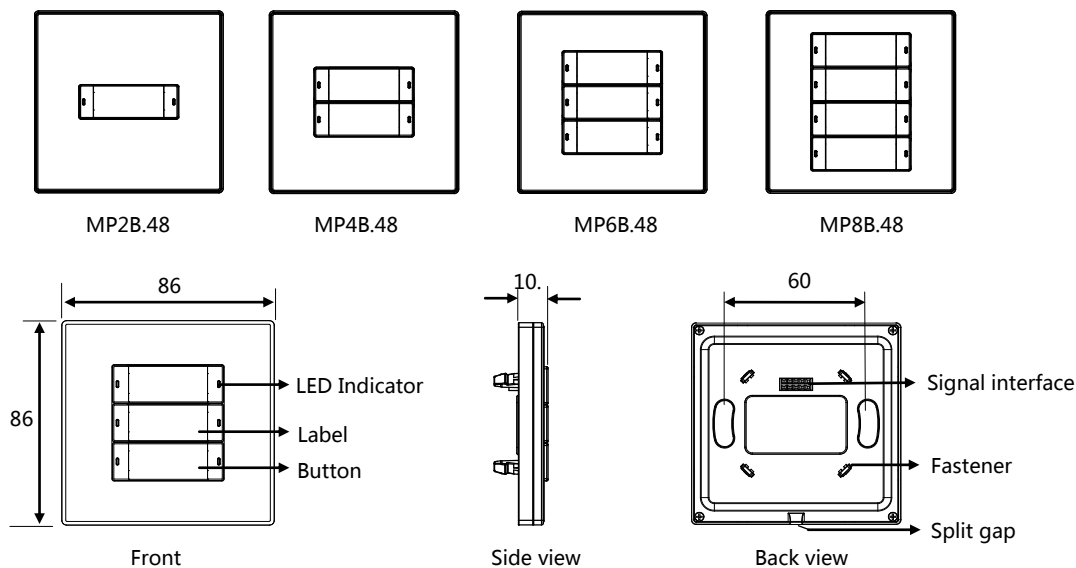
- Key Mode: Single on/off, Single on, Single off, Combination on, Combination off, Combination on/off, Double click single on/off, Double click combination on/off, Inching, Short/long press, Short press/long inching.
- Key Control Type: Scene, Sequence, Timer, Universal Switch, Single Channel Control, Broadcast Scene, Broadcast Channel, Curtain Control, GPRS Control, Panel Control, Security Module, Music Play, Universal Control, etc.
- Button Lock, mutually exclusive function.
- Built-in IR receiver, need to replace a plate with an IR receiving hole to enable the IR remote control function.
- IR remote control function.
- Customized Button labels, plate can be replaced.
- Key LED status is adjustable.
- Support HDL-Bus Pro online upgrading .

HDL-Bus Definition for Cable

HDL-BUS	HDL-Bus/KNX
DC24V	Red
COM	Black
DATA-	White
DATA+	Yellow



Dimensions and Wiring



Push Button: On/ Off, Dim

Button Indicator : Indicates the status of the controlled target. On– Status on; Off– Status off. User can define the color of status.

Address Modification: Keep pressing any button for about 15S, and then all button LED indicators will flash together, use HDL-Bus pro Set up software to modify the address by step "Address Management > Address Modification", then press any button will exit program mode.

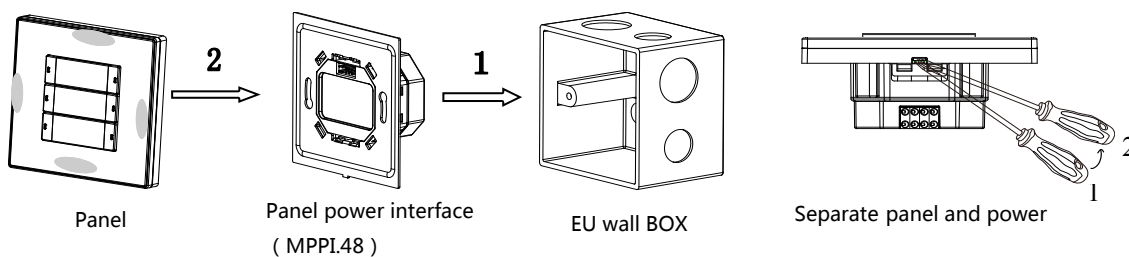
Button Label: User can print and replace their own button labels, pull out the cover and put down the label, then user should install the cover.

Panel Unlock: After the button is locked, press the first button and the last button for about 2S.

Signal interface and fastener: Connect to panel power interface (MPPI.48).

Split gap: Insert a slotted screwdriver to the split gap, separate the panel and power module (MPPI.48).

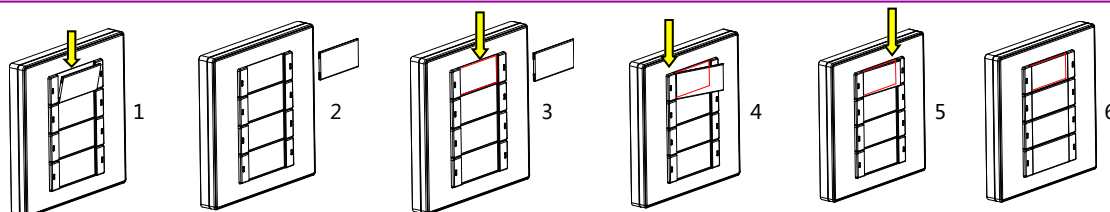
Installation



Installation: Hold the edge of panel, (shown as above), insert the power interface module vertically. Do not push the panel too hard.

Split: Insert a 2.5mm-screwdriver to the split gap, pry up position 1 to 2, then the wiring hole will open. Then separate the panel and MPPI.48.

Change the button labels (shown as below)



1. Open the plastic (shown as picture) 2. Remove it (take out the label if it is inside) 3. Put the new label in the middle place 4. Put one side of plastic to the button 5. Press the other side of plastic to the button 6. Finish to change the button label

Notes: Label dimension is 31.5mmX14.5mm, user can use same way to change each button label.