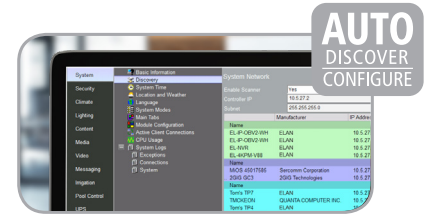


IP Indoor Fixed Lens Dome Cameras with IR



EL-IP-IDF4-WH

EL-IP-IDF2-WH



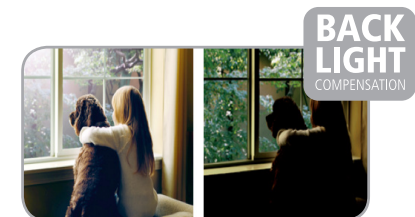
ELAN surveillance cameras feature one-click camera setup with ELAN Discovery.



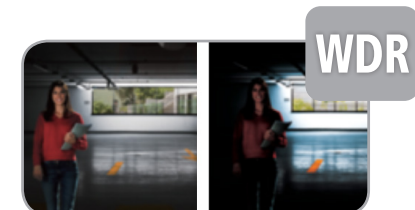
Illumination from Infrared (IR) LEDs enables night vision up to 30 meters.



Motion in front of the camera will be detected and saved as an event.



Back Light Compensation adjusts the exposure of the image to properly expose the subject of interest.



Wide Dynamic Range improves image quality by balancing dark and light areas in an image.

Intelligent Indoor Monitoring.

The ELAN EL-IP-IDF2 and EL-IP-IDF4 dome cameras are perfect for indoor applications in which a wide area such as a large foyer or living room needs monitoring and a visually unobtrusive camera is preferable.

The ceiling-mounted ELAN EL-IP-IDF2 and EL-IP-IDF4 provide high resolution video, Lens Distortion Correction, 3D Digital Noise Reduction, flexible mounting options and a seamless and clean aesthetic compared to bullet or turret cameras.

ELAN Discovery

Like all ELAN Surveillance products, the ELAN EL-IP-IDF2 and EL-IP-IDF4 are embedded with the ELAN beacon, making them effortless to install in an ELAN system. In the Configurator, ELAN Discovery scans your network, both wired and wireless, automatically discovering the SSIDs of

available devices. With a click, the camera is configured and installed in the ELAN system. We've eliminated the need to use a secondary application to setup the device outside of ELAN—saving you substantial time on every surveillance installation.

The ELAN EL-IP-IDF2 and EL-IP-IDF4 cameras have the quality, reliability, best-in-class features and ELAN customer support that you and your clients rely on.

Comprehensive Surveillance

ELAN Surveillance cameras work seamlessly with the ELAN Network Video Recorder (EL-NVR Series), to create a surveillance ecosystem that excels in every application.

EL-IP-IDF2 | EL-IP-IDF4 IP Indoor Fixed Lens Dome Cameras with IR



ORDER NOS. EL-IP-IDF2-WH, EL-IP-IDF4-WH



FEATURES

- Auto-Discover/Auto-Configure
- 4 Megapixel or 2 Megapixel
- High Dynamic Range (HDR)
- 30m IR Distance
- 4mm Fixed Lens
- Lens Distortion Correction
- Advanced Built-in Motion Analytics
- Micro SD Card Slot
- Alarm In/Out
- 2-Way Audio Support
- Automatic Gain Control (AGC)
- Operating Temperature: -13°F – 122°F
- Max Frame Rate: 20FPS @ 2688x1520
- 3D Digital Noise Reduction
- 2D Wide Dynamic Range
- Power Over Ethernet (PoE)

INCLUDED IN THE BOX:

- (1) Camera
- (1) Quick Installation Guide
- (1) Mounting Template
- (3) Mounting Hardware
- (1) Allen Wrench
- (2) Alarm/Audio Jumper Cable



www.elanhomesystems.com

SPECIFICATIONS	
Power Consumption	DC12V, 4.57W / PoE, 5.8W (IEEE 802.3af)
Dimensions	4.3" x 3.5"
Weight	12.9 oz.
Operating Temperature	-13°F – +122°F (-25°C – +50°C)
Angle of View	EL-IP-IDF2: 90°(H), 45°(V), 107°(D) EL-IP-IDF4: 84°(H), 44°(V), 100°(D)
IR Range	30m
Alarm Event Triggers	Motion/Tamper/Network lost detection
Alarm Event Actions	FTP, SMTP, HTTP post, SD card, SAMBA
SD Card Recording	Support Micro SD/SDHC/SDXC (up to 128GB) card for circular recording (card is not included)
CPU Memory	Embedded SoC ARM Cortex-A9, 600MHz, 256MB DDR3, 256MB flash memory
Intelligent Video Surveillance	Advanced motion detection, Tripwire detection, Semaphore + Tripwire detection, Object counting
Certifications	CE: Class B, FCC: Class B

VIDEO	
Video compression	Smart H.264/ H.264 High/Main Profile, Motion JPEG
Maximum Frame Rate	H.264 and MJPEG: 30 FPS@1920 x 1080, 20 FPS@2688 x 1520
Day/Night (IR-cut filter)	Color (Day), Monochrome (Night), Auto, Schedule
Scanning system	Progressive scan
Back Light Compensation	On / Off
2D WDR	Off / Auto / x2 / x3 / x4
High Dynamic Range (HDR)	Up to 100dB
3D Noise Reduction	Off / 1 to 32 selectable
Privacy Masking	Off / On (4 independent areas)
Sense Up	Off / 1 frame / 2 frames
Sense Up+	Yes
Auto Gain Control	42 dB variable gain
Other Functions	Sharpness, Hue, Image flip, Image mirror
Lens Distortion Correction (LDC)	Yes

NETWORK	
Ethernet	10Base-T / 100Base-TX, RJ-45
Connectivity	ONVIF Profile S
On-Screen Display (OSD)	Text over date, time, and camera name
Protocols	IPv4, IPv6, TCP, UDP, HTTP, HTTPS, SMTP, MQTT, QoS, SNMP , SNMP Trap, NTP, DDNS, UPnP, FTP, ARP, DHCP, PPPoE, DNS, RTSP, RTCP, Telnet, ICMP, IGMP, ONVIF Profile S, SDDP, Bonjour
Multi IP Addresses	Yes